



Elite Academic Academy - Lucerne

Please join my meeting from your computer, tablet or smartphone. Join Zoom Meeting

<https://eliteacademic.zoom.us/j/97566202696?>

pwd=R2daZzJSNnZPNUV3Nk83K0diZXJtUT09 Meeting ID:
975 6620 2696 Passcode: 920373

September 7, 2023 at 9:00 am

43414 Business Park Drive, Temecula, CA 92590

23504 Lyons Avenue, Santa Clarita CA 91321

13255 Black Mountain Road San Diego, CA 92129

109 Don Carlos Way, Ojai, CA 93023



Elite Academic Academy - Lucerne September 7, 2023

Board Of Directors - Elite Academic Academy - Lucerne

Meeting Location

Due to the ongoing COVID-19 pandemic, this meeting will be held via teleconference.

Members of the public may observe the meeting and offer public comment using the

following dial-in numbers and/or internet link: Join Zoom Meeting
[https://eliteacademic.zoom.us/j/97566202696?](https://eliteacademic.zoom.us/j/97566202696?pwd=R2daZzJSNnZPNUV3Nk83K0diZXJtUT09)
pwd=R2daZzJSNnZPNUV3Nk83K0diZXJtUT09 Meeting ID: 975 6620
2696 Passcode: 920373

Time:

1.0 Call To Order

Roll Call:

Susan McDougal, Cody Simms, Kent Christensen

2.0 Approve/Adopt the Agenda

It is recommended the Board of Directors adopt as presented the agenda for the Board Meeting of September 7th, 2023.

Motion: Second:
Vote:

3.0 Board Organization

3.1 Board Treasurer/Clerk Resignation

It is recommended that the board approve the resignation and release of the Treasurer/Clerk of the Board of Directors for Elite Academic Academy - Lucerne.

Motion: Second:
Vote:

[Kent Christensen Board Resignation EAA - LU.pdf](#)

4.0 Public Comment -Closed Session

The public has a right to comment on any items of the closed session agenda. Members of the public will be permitted to comment on any other item within the Board's jurisdiction under section 9.0 Public Comments at Board Meetings.

5.0 Adjourn to Closed Session

The board will consider and may act on any of the Closed Session matters listed in Agenda Item 14.0.

6.0 Closed Session

The Board will consider and may act on any of the following items in closed session; any action taken in closed session will be reported in open session as required by law.

6.1 Personnel Matters (With respect to every item of business to be discussed in closed session pursuant to Government Code Section 54957.6)

6.2 Employer/Employee Relations (With respect to every item of business to be discussed in closed session pursuant to Government Code Section 54957.6)

Time:

7.0 Pledge Of Allegiance

8.0 Open Session

9.0 Public Comment

Please submit a request to speak to the Board of Directors. Cards can be asked for by emailing galtamirano@eliteacademic.com. Please complete and return the form for agenda items or non-agenda items, prior to the meeting. Not more than three (3) minutes are to be allotted to any one (1) speaker, and no more than twenty (20) minutes on the same subject. This portion of the agenda is for comments, recognitions and reports to the Board and is not intended to be a question and answer period. If you have questions for the Board, please provide the Board President with a written copy and an administrator will provide answers at a later date. A request for disability-related modifications or accommodations in order to participate in the public meeting, including auxiliary aids or services, may be made to Ms. Meghan Freeman at mfreeman@eliteacademic.com at least 72 hours prior to the meeting.

10.0 General Functions

10.1 Informational Items

A. CEO Authorizer Report

[EAA-LU CEO Report 09.07.23.pdf](#)

10.2 Consent Agenda

It is recommended that the board approve the following consent agenda items.

Motion: Second:
Vote:

A. Meeting Minutes from August 3rd, 2023

[EAA-LU 08.03.23.pdf](#)

B. Warrant Register

[WarrantRegisterLU_Sep_2324.updated.pdf](#)

C. New Instructional Materials Community Partners

[Elite Academic Instructional Service Community Partner_August_2023 - VCI Community Partners.pdf](#)

D. New Educational Materials Community Partners

[Elite Academic Educational Materials Partner_August_2023.xlsx - EM Partners.pdf](#)

11.0 Personnel Services

11.1 Employee Contracts

It is recommended that the board ratify the following Employee Contracts for Elite Academic Academy - Lucerne.

[EAA-LU Employee Contracts 08.2023.pdf](#)

Motion: Second:
Vote:

11.2 Employee Contract Addendums

It is recommended that the board ratify the following Employee Contract Addendums for Elite Academic Academy - Lucerne.

[EAA-LU Contract Addendums 08.2023.pdf](#)

Motion: Second:
Vote:

11.3 Employee Changes of Relationship

It is recommended that the board ratify the following Employee Changes of Relationship for Elite Academic Academy - Lucerne.

Motion: Second:
Vote:

[EAA-LU Changes of Relationship.pdf](#)

11.4 Employee Release and Resignations

It is recommended that the board ratify the following Employee Release and Resignations for Elite Academic Academy - Lucerne.

Motion: Second:
Vote:

[EAA-LU 08.23 Employee Release and Resignations.pdf](#)

12.0 Business Services

12.1 CTE Medical Pathway Equipment Proposal

It is recommended that the board approve the following CTE Medical Pathway Equipment Proposal for Elite Academic Academy - Lucerne.

Motion: Second:
Vote:

[Quote 17863 \(1\).pdf](#)

12.2 Elite Marketing Invoices

It is recommended that the board approve the following Elite Marketing Invoices for Elite Academic Academy - Lucerne.

Motion: Second:
Vote:

[Bagger Sports Invoice \(1\).pdf](#)

[Bagger Sports Invoice \(2\).pdf](#)

12.3 CTE Computers for Animation Course Invoice

It is recommended that the board approve the following CTE Computers for Animation Course Invoice for Elite Academic Academy - Lucerne.

Motion: Second:
Vote:

[Animation Computers \(1\).pdf](#)

12.4 Curriculum Proposals 23.24

It is recommended that the board retroactively ratify the following Curriculum Proposals 23.24 for Elite Academic Academy - Lucerne.

Motion: Second:
Vote:

[BrainPOP Quote.pdf](#)

[Curiosity Stream Quote.pdf](#)

[EliteAcademic.ALEKS.072723.pdf](#)

[Q-552973 -Edmentum Elite Academic Academy 23_24 Order Form.pdf](#)

[Rosetta Stone Quote.pdf](#)

[Zingy-Elite.pdf](#)

12.5 Elite Enrollment App Proposal

It is recommended that the board approve the following Elite Enrollment App Proposal for Elite Academic Academy - Lucerne.

Motion: Second:
Vote:

[Enrollment App EAA 083023 \(3\).pdf](#)

12.6 Aug 2023 Professional Development Final Invoice

It is recommended that the board approve the Aug 2023 Professional Development Final Invoice for Elite Academic Academy - Lucerne.

Motion: Second:
Vote:

[Elite Academic Bill 8.28.23-Final 1.pdf](#)

12.7 Resolution to Increase Educational Funds

It is recommended that the board approve the following Resolution to Increase Educational Funds for Elite Academic Academy - Lucerne.

Motion: Second:
Vote:

[EAA-LU Board Resolution #2023-09-07-BR Increase in Ed Funds.pdf](#)

12.8 Payroll Allocation

It is recommended that the board approve the following Payroll Allocation for Elite Academic Academy - Lucerne.

[FY 23 Allocation Summary.pdf](#)

[FY 23 FTE Calc \(1\).pdf](#)

Motion: Second:
Vote:

12.9 CONAP Docs

It is recommended that the board approve the following CONAP Docs for Elite Academic Academy - Lucerne.

[LU_AppforFndng.pdf](#)

Motion: Second:
Vote:

13.0 Educational Services/Policy Development

14.0 Report of Action Taken in Closed Session

The Board will report any action taken in closed session as required by law.

15.0 Calendar

The next regularly scheduled meeting is October 5th, 2023 at 9:00 a.m.

15.1 Updated Board of Directors Meeting Calendar 23.24

It is recommended that the board approve the following Updated Board of Directors Meeting Calendar 23.24 to include a Special Meeting on October 13th, 2023 for Brown Act Training for Elite Academic Academy - Lucerne.

[EAA-LU 2023-24 Board of Directors Meetings Calendar \(Rev 2\).pdf](#)

Motion: Second:
Vote:

16.0 Board Comments and Future Planning

Time:

17.0 Adjournment

In compliance with Government Code section 54957.5, open session materials distributed to Board Members for review prior to a meeting may be viewed at the eliteacademic.com or at the scheduled meeting. Board agenda back-up materials may also be requested by calling the School at 1(866)354-8302. In addition, if you would like a copy of any record related to an item on the agenda, please contact administration.

In compliance with the American with Disabilities Act, if you need special assistance, disability-related modifications or accommodations, including auxiliary aids or services, in order to participate in the public meetings of the charter's board of directors, please contact the School at 1(866) 354-8302. Notification 72 hours prior to the meeting will enable the School to make reasonable arrangements to ensure accommodation and accessibility to this meeting. Upon request, the School shall also make available this agenda and all other public records associated with this meeting in appropriate alternative formats for persons with a disability.

Motion: Second:
Vote:

September 5, 2023

To: Elite Academic Academy – Lucerne

I, Kent Christensen, hereby offer my formal resignation from the Elite Academic Academy – Lucerne Board of Directors, from the position of Treasurer/Clerk, effective August 31, 2023.

It has been an honor to serve Elite Academic Academy – Lucerne in this capacity.

Sincerely,

DocuSigned by:

D2A093FF776F42E...

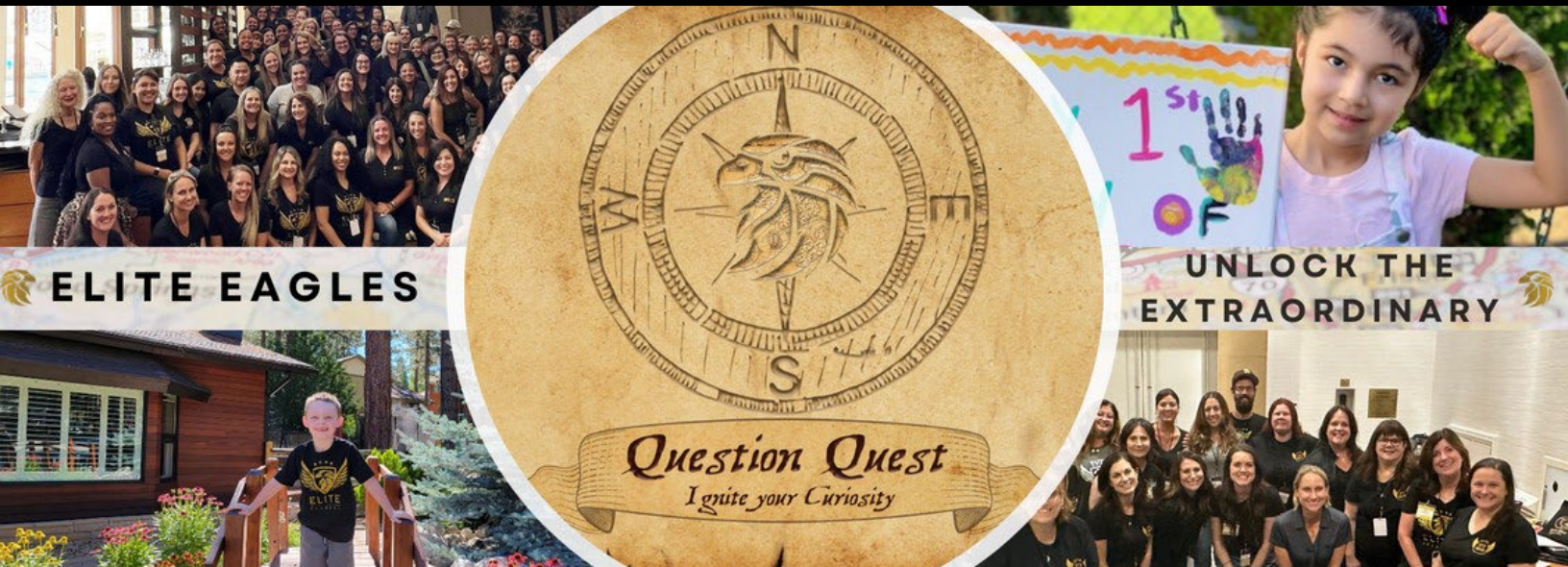
Kent Christensen



CEO Report



"Offering personalized education with unparalleled flexibility, support, and learning options."



August Celebrations

August was busy preparing for the beginning of the traditional school year. We held an intensive-person **professional development** in Palm Desert to kick off the school year. New staff collaborated with returning staff, and we introduced our theme this year of **Question Quest**. We are using this theme to ignite the curiosity in our students and work with staff to increase their ability to ask thought-provoking questions to increase student engagement. The first week of school was a success. We celebrated online through Virtual Orientations and Back to School events. We celebrated in person at our Back to School kick-off events in multiple cities to ensure all families could participate. We look forward to a great 23.24 school year and know that together, this year will be a success!

Staff Highlight

We would like to shine a spotlight on Kristen' Hjelsands exceptional abilities to inspire and guide her teaching staff, as well as her willingness to step up into the role of the Virtual Director. Kristen has consistently demonstrated remarkable leadership qualities that have had a profound impact on our team.

One of Kristen's most outstanding strengths is her ability to motivate and empower her colleagues. She has an innate talent for recognizing the potential in individuals and knows how to bring out their best. Kristen consistently fosters an environment of collaboration and growth, making everyone feel valued and appreciated. Her infectious enthusiasm and positive attitude have a ripple effect on the entire staff, creating a vibrant and energized atmosphere. We're so honored you have chosen to #BeElite!



Essential Highlights

Six Elite Essentials



Celebrate On Target

Aligned Resources



Professional Development



Parents and Community



Responsive Instruction



Student Work and Data



Shared Leadership



ACADEMIC INNOVATION

WE ARE KICKING OFF THE SCHOOL YEAR SHIPPING A TOTAL OF 343 DEVICES TO OUR FAMILIES SUPPORTING OUR STUDENTS.

NEW TEAM MEMBERS INCREASE SUPPORT!

6 C'S FOR ALL!



Congratulations Alli Waters for becoming our **new Coordinator of Teacher Support!** She has jumped into the role, supporting new teachers by helping them navigate essential processes, clarifying procedures, managing curriculum ordering and providing valuable assistance in ensuring optimal student success. Our commitment to facilitate seamless educational experiences through proactive engagement with both educators and students is supported by her new role!



Congrats Danielle Gregus for earning the **Lead title!** Danielle has been with Elite since the beginning, teaching Adult Ed and then transitioning to a MS/HS Content Teacher. She has a wealth of EAA knowledge and is always willing to share her expertise and support our new and veteran Elite staff. Danielle is an invaluable addition to our leadership team and we look forward to having her share her lens on all our innovative endeavors.



During Professional Development Content Teachers collaborated across subject areas to design new, interactive learning opportunities for students that are full of the 6Cs of our Elite Portrait of a Learner. Keep a look out for a Tide Pool field trip, an Elite music video with students from our ukulele, dance, and ASL courses, a creative project bringing together English, graphic novels, and multimedia design, and more!

FROM PORTRAIT OF A GRAD TO ELITE LEARNERS



When staff brainstormed in February what skills a graduate should possess, we came up with the 6 C's: Curious, Critical Thinkers, Communicators, Compassionate, Collaborators, and Creative.

However, we know that those are skills we value in all students and staff all the time, so our updated graphic reflects the fact that we all possess the 6 C's and need to nurture it in each other for a happy and successful life.

STUDENT DEVELOPMENT

Our **Marketing and Communications Department** has been busy setting up ParentSquare Groups, planning Events and Field trips for the entire school year, organizing school clubs, and revamping our website pages.

Our **CTE Teachers**, under the direction of Associate Director, Lupe Rodriguez, have written and approved **5 A-G CTE Courses this month!**

Meet n' Greet



Our second annual Meet n' Greet was a success! We had two park locations for families to choose from. Families were able to meet their Elite Educators, counselors, Directors, and staff. Students enjoyed park games such as potato sack races, hula-hooping, and some fun games of kickball. What a fantastic way to start off the school year!

School Counselor



Jessica Yazdani is our new school counselor. She is working with our high school and middle school students on 4-year planning, career and college goals, AP testing coordinating and more. She has already made a significant impact with students and has some amazing college and career experiences planned for our students this year. Welcome, Jessica!

Animation Experience



Our Beginning of the Year Professional Development with our Elite staff was a hit thanks to our new CTE Animation teacher, Oceano Marshall. Mr. Marshall led our staff through an animation experience using Pico8. The staff was able to learn Pico8 and also how to build their own superhero animation character. Our students are excited for the new Animation and Game Development pathway.

Peak Performance Athletes

Joel Vargas, in our 8th Grade Virtual Academy, was selected for the Perfect Game 13U Select Fest and played in a nationally televised game for the West Team on Sunday, August 27th at the University of Tennessee. Joel was one of only 20, 13U West Coast student-athletes selected by Perfect Game Scouts from tournaments he played in throughout the year. He has been in the Virtual Department and with the Peak Performance Athletic Team since last year. Joel has risen to the top of his class academically while attending a community partner training facility in San Diego on school days and traveling throughout the country playing baseball.



OPERATIONS

A BIG THANK YOU TO OUR TEAM FOR DILIGENTLY WORKING THESE PAST MONTHS ON THE END OF THE 22/23 SCHOOL YEAR CLOSEOUT, LEVEL UP ENROLLMENTS AND COMPLIANCE, ENROLLMENT FOR THE 23/24 SCHOOL YEAR, AND ALL THINGS THAT COME WITH ALL OF THIS:

CHAD, VINCENT, RACHEL, SAMUEL, DANIELLE, PRISCILLA, DEVIN, AND JORDAN
- YOUR OPERATIONS TEAM

ADMISSIONS



The Admissions Team has closed out the Level Up enrollment period with 1552 students participating in our program including 152 students who will be staying with EAA for the full school year. During this time, the team has also worked on new enrollments for the fall semester, enrolling over 600 new students to the EAA family. Enrollment will continue throughout this next month to bring us to the enrollment targets. Next on the list is requesting all the permanent student records for these new students, along with entering all their transcripts into our SIS.



COMPLIANCE



Our Compliance Team worked throughout the Level Up program to ensure all compliance portfolios were accurate. This includes master agreements, addendums, work samples, AWRs, learning logs, and finally attendance forms. Although there were many glitches to work through, **the new bridge from our SIS to our LMS which automatically created the AWR for each student ended up being very successful, allowing teachers more time to focus on their students.** Ashly Steele & her team worked with our team to ensure all students' work was accounted for, resulting in **higher than ever ADA percentages: 95% for Lucerne and 97% for Mountain Empire!**

STATE REPORTING



Our Operations Team has worked these past weeks to ensure all Level Up students were exited and recorded in the state system, Calpads. This is important because we must ensure students returning to their home districts are exited prior to the start of their school year. **The team is now working on pulling SSIDs for all students who have enrolled with EAA for this school year.** The next round of state reporting will be in October for CBEDs, HDC collections, and immunization reporting.



COMMUNITY RELATIONS



CURRENT ELITE COMMUNITY PARTNERS: 128 VCI/ 144 EMR
 REIMBURSEMENT TRANSACTIONS: 100 PRE-APPROVALS
 INVENTORY/CURRICULUM ITEMS SHIPPED: 1,200+



COMMUNITY PARTNERS



The Community Relations Department has **received and processed renewal paperwork for 114 returning community partners and 30 new applications [VCIs and EMRs].** The CR team is working hard to process all of the incoming paperwork and looking forward to working with Elite's new and returning community partners for this school year!!

REIMBURSEMENTS

If what you need is not available from an approved Curriculum or Community Partner, then select the appropriate pre-approval request form.

Which form do I use?

Parent Pre-Approval for Educational Materials (EMR)

- Textbooks, workbooks, manipulatives
- Educational materials and supplies
- Videos and downloadable curriculum
- Access passes or tickets to museums, zoos, events, memberships, subscriptions, etc.
- Check the Parent Student Handbook for restrictions

Parent Pre-Approval for Enrichment Activities (VCI)

- Live instruction classes in music/art/dance/martial arts/swimming/gymnastics, etc.
- Sports teams and coaching

It will take you directly to the DocuSign PowerForm to complete.

Effective August 28, 2023, all tutoring services must be provided by one of our highly qualified Elite approved Community Partners. Any unapproved Enrichment Provider for tutoring services will NOT be reimbursed.

The Community Relations Department has completed their first annual Parent/Guardian Reimbursements Training Sessions this month. The reimbursements team has taken several weeks to prepare and provide training sessions for new and returning Elite families on our reimbursement process using the new PowerForms. **They received 800 registrations for their PowerForms Training sessions, which is a 45% positive response from the new and returning Elite families. Great job, reimbursementsteam!!**

INVENTORY



The Community Relations Department has packed and shipped **over 1,200 envelopes/boxes for Flex Curriculum, Virtual/CTE/Enrichment Curriculum and supplies, Downey student boxes, and more!** The CR team has been showing great teamwork as they work together on minor/major projects, events, and orders!!

Equipped For The Journey



The Community Relations Department has **prepped and packed over 150 totes equipped with all of the essentials needed for this year's journey.** The CR team received new Elite staff t-shirts, collared shirts, and tote bags for the new school year theme: **Question Quest**. Get ready for another year of adventure as the Elite staff make their mark on the world **one question at a time!!**



AUGUST PROFESSIONAL DEV

"I am proud to be a part of Elite's culture."

"We are many teams but one family."



"If there are no questions then there is no learning."

"How did I get so lucky to be a part of Elite?"

3.8/4
very satisfied with the PD experience

Elite staff gathered for two days of in-person professional development focused on the theme of **"Question Quest"** and how it connects to Elite's **6C's**. They learned about the four beautiful questions: **Why? Why not? What if? and How?** and how to use those questions to **connect and engage** with students, families, and colleagues. **Curiosity** and **critical thinking** were on display during a Coding introduction led by new CTE Teacher Oceano Marshall, and **collaboration** was high during Friday's Academy and Department meetings



HOMESCHOOL

23-24 CURRENT ENROLLMENT: 866 STUDENTS
 LU: 306 STUDENTS | ME: 560 STUDENTS
 **ENROLLING STUDENTS FROM WAITLIST

TEACHER SPOTLIGHT: MORGAN CHILDERS

Morgan is a new to us at Elite but not new to the homeschool world! She lives with her husband John, three kids: Emerson, Avery & Brady, and their doggie, Kali. Her favorite family tradition is handmade and personalized Christmas stockings hung up each year. You might be surprised to learn that she is a talented cake decorator and cross-stitcher!

Morgan has jumped into Elite head first and only weeks into the job is doing a wonderful job supporting her students and families!



FIRST WEEK OF SCHOOL!

Homeschool Teachers met with ALL of their families **personally** before school for their Initial Meetings to solidify curriculum options, learning plans, and to establish **relationships** and **connection**.

We are proud to welcome all of our Homeschooling Families to the 2023-24 school year! Thank you for Choosing to #BeElite!



PARENT UNIVERSITY SERIES

You asked, we listened! With over **300 new Homeschool students** this year, we are proud to introduce our **PARENT UNIVERSITY** Series, open to ALL Homeschool Academy Parents to become better educators!

We have **SEVEN** uniquely curated **LIVE Trainings** for Homeschool Families, each overseen by a Cohort of teachers and parents.

Let's glean from each other in pursuit of becoming the best educators we can!

2023-24 TOPICS INCLUDE:

- 9/1: Getting STARTed! Your Space, Your Routine, Your School!
- 9/8: Homeschooling Multiple Children
- 9/22: You CAN Teach your Child to Read!
- 9/29: You CAN Teach your Child Math!
- 10/13: Student Learning & Progress (Benefits of i-Ready)
- 12/1: Finding Your Tribe & Connecting Together
- 1/19: What to do when Homeschooling is HARD!

EAGLE EXPLORERS FALL 2023

September 18th
to
November 17th

TK-8 FUN & ENGAGING ENRICHMENT CLASSES
CREATED FOR YOUR FAMILY!

TK-3RD
 EXPLORING ASL
 ELITE BAKERS
 THE WRITERS CLUB
 KIDZ BEAT: DANCE, FUN & FITNESS
 CRAFTS AROUND THE WORLD
 CRAZY ABOUT GAMES
 SOUNDS RIGHT PHONICS
 LITTLE EXPERIMENTS, BIG IDEAS
 KID ARTISTRY: INSPIRED BY THE GREATS
 SEWING SEA CREATURES

4TH-8TH
 DIGGING INTO BOOKS:
 HOLES NOVEL STUDY
 MATH QUEST
 SKETCH & SCRIPT
 MEET THE FUTURE: AI

9TH-12TH
 EXPRESSIVE ELOQUENCE
 TEDX ELITE

HOMESCHOOL EAGLE EXPLORER CLASSES

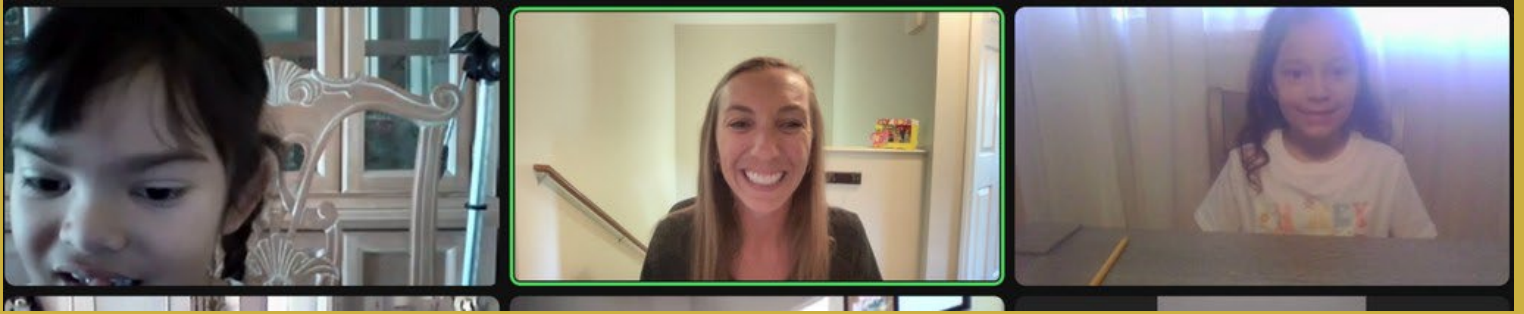
Our **Eagle Explorer** Classes are back by popular demand for the 2023-24 school year! These are **FREE** weekly classes taught by Homeschool Teachers of Record for Homeschooling Families.

There is something for everyone! From core writing, writing, and math to AI, Science, Art, Sewing, ASL, and so much more!!

In addition to curated Eagle Explorer classes, we also have **DAILY** Read-Aloud opportunities for all families to join!

The first session starts September 17th!

FLEX



BACK TO SCHOOL HIGHLIGHTS



431 FLEX CURRICULUM BOXES SHIPPED!

2,050 FLEX COURSE ENROLLMENTS!

115 FLEX FAMILY ONBOARDING MEETINGS!

KICKOFF MEETINGS, BACK TO SCHOOL NIGHT, HOMEROOM CONNECTIONS, AND MORE!



INTRODUCTION MEETINGS

BACK TO SCHOOL NIGHT

FLEX KICKOFF MEETINGS



Flex has a **HUGE focus** on **connections**. The more connected students and parents are to our program the more successful & engaged they will be. We want the entire family to **take ownership** and to be **engaged!**

Highlights

- Teachers met with every family
- Discussed curriculum & goals
- Shared strengths & concerns
- Created a plan for the first LP

Each Flex teacher of record held a **Back to School Night** for parents and students. Some teachers conducted their Back to School Night together as a POD – **#collaboration**.

Highlights

- Parent/Student/Teacher Role
- What's New?
- Support, support, & more support
- We are a team!

Each Flex teacher of record held a **First Day of School Kickoff** meeting. The goal was to welcome students back to school as well as make sure they were **prepared for success**.

Highlights

- First day of school scavenger hunt
- First day of school checklist
- Email Access
- Canvas Course Access



23-24 ENROLLMENT: CURRENTLY 570 STUDENTS
NEW TEACHERS: 7

NEW TEACHERS OF RECORD



We are **SO EXCITED** to introduce you to our **NEWEST** Teachers of Record at the Virtual Academy. Please join me in welcoming these **AMAZING TORs**:

- Al Smith**
- Brendon Boitano**
- Rachel Camarillo**
- Valeria Garcia**
- Caroline Ruffridge**
- Gagik (Jay) Begijanmasihi**
- John Valdez**

They hit the ground running on Day One and have joined our other incredible TOR's in welcoming new and returning families to the Virtual Academy. You are **AWESOME!**

DUSD PARTNERSHIP



Elite Virtual Academy is proud to be partnering with Downey Unified School District to **provide a virtual program for Downey students who want to learn from home.** So far, **105 DUSD students are planning to join us for the upcoming school year!**

Students joining us from DUSD will be able to:

- Participate in **CIF sports** with Downey teams
- Take up to 2 **in-person elective classes** at a Downey high school
- Receive **in-person academic support and enrichment** 2 days a week

BACK TO SCHOOL VIRTUAL KICKOFF



It's unconfirmed, but the running rumor is that we broke the Internet for our 1st Day Kickoff with Students on August 28th!!!! There were SO many students, we had to open up an additional Zoom to accommodate everyone!! That says a lot about the dedication of our students and their **LOVE FOR ELITE! Students were able to meet their teachers, validate their Class App zoom links for live sessions, and walk through their Canvas courses with their teachers. This left our students feeling prepared for the 23/24 school year!**

VIRTUAL TEACHER SPOTLIGHT



Please join me in celebrating our September Teacher Feature: Ms. Ruthie Chatton!!! Ruthie joined our Virtual Academy team earlier this year, and more recently became a Lead within our team!

One of the most salient features about Ruthie is her unwavering kindness and ability to connect with others. A colleague was quoted as saying, "**Ruthie is the most kind hearted and genuine coworker and teacher I have ever met. She always has a positive attitude and a big smile. The impact on her students and her school are second to none. She makes her students and coworkers better humans. I am so lucky to get to work with her again and so thankful that she has helped welcome me to Elite.**" Another comment from the field was, "**Ruthie has helped me 'round the clock, introduced me to staff, has been available via text, phone, and zoom. She has the most patience of any teacher that I've ever had and has taught me more in a short time than any other teacher ever has. And, she is always positive and makes others around her feel positive too.**" Ms. Chatton, your colleagues could not be more spot-on! We are so fortunate to work with you, Ms. Chatton!!! Thank you for being ELITE!



SUMMER ONBOARDING OF NEW FAMILIES WAS A SUCCESSFUL QUEST!

- ◆ CONTACTED 484 NEW FAMILIES
- ◆ 437 MASTER AGREEMENTS SIGNED

- ◆ 147 IREADY READING DIAGNOSTICS
- ◆ 159 IREADY MATH DIAGNOSTICS

SPED IS GROWING



The Special Education Team has almost doubled in size! During the month of August, the team spent valuable time learning, collaborating, and team building with their newly-promoted department leaders, Jen Edick and Misty Cervantes. The Special Education Team is looking forward to supporting their students on their quest to success!

NEW SUPPORTS AVAIL!



Preparing to Collaborate, Connect, Celebrate and Dive Into Our Data Together we developed The Helm, a monthly leadership meeting.

ELITE LEARNING LABS

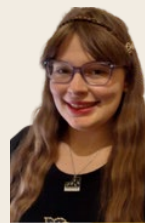
Lab coaches are working to launch an improvement plan. The new labs will incorporate time for students to work on their iReady personalized pathway along with new engagement strategies.

WRAP AROUND PROGRAM

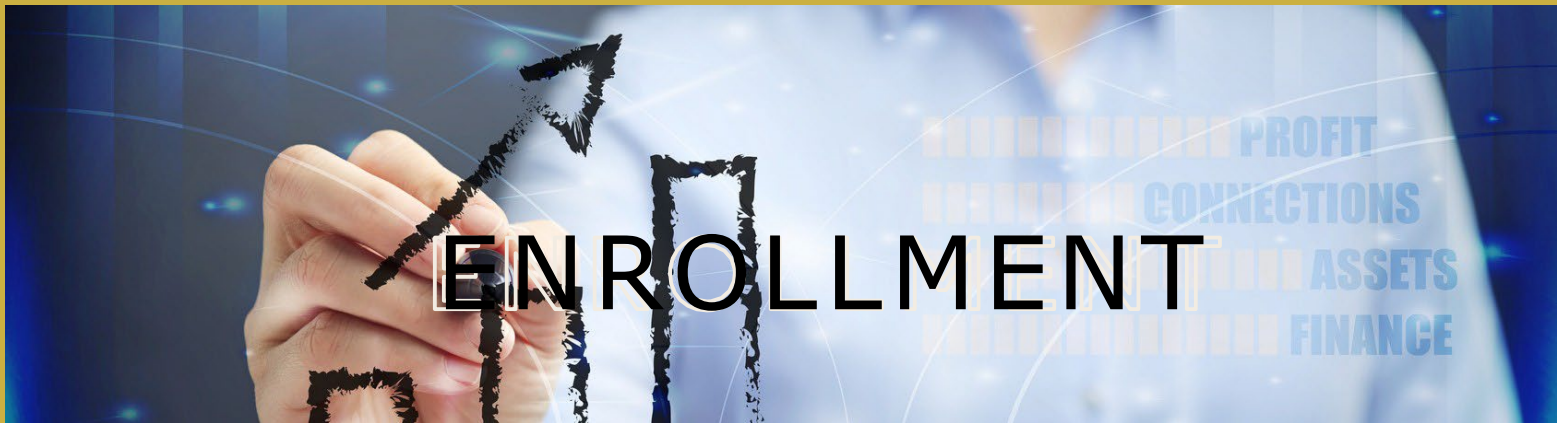


We have been busy starting our newest initiative Elite's Wrap Around Program, a proven strategy for coordination of different teams, learning supports and resources to meet student needs. The Wrap Around Team consists of a multidisciplinary team of school staff and providers that meet weekly to collaborate and provide ongoing support. The teams identify, assess, coordinate and expand tiered levels of support being offered to students. The benefits of Wrap Around are to improve coordination, communication and collaboration across disciplines.

Elite Grad Jeannelle Reeves joined our team as an Academic Support Coach. She is working with elem students to help them feel connected and engaged!



- ◆ We would like to welcome two new members of the Counseling Team: Jessica Yazdani and Meg Lammers! Jessica Yazdani is our new Guidance Counselor and is excited to connect with students and families to support them with their academic and college/career goals. Meg Lammers is our new School Counseling Intern and will also be helping us cultivate a compassionate and collaborative school environment for all.
- ◆ The Counseling Team will be hosting the first session of “Freshman Academy” on August 30th at 12pm. These sessions are aimed at empowering and equipping our students with the academic and social-emotional skills they need to be successful! All freshman students are welcome to join.



Lucerne

ACADEMIC
ACADEMY

NEXT MONTH

I Ready Assessment



We look forward to getting BOY I ready results so we can work to create personalized plans with students and families . We should have all IReady testing completed by the first week in October.

Data Dives Begin



Data dives will begin in October to review CAASPP and local I Ready data. These will be incorporated into department tactical planning to ensure we are working toward our LCAP goals.

Elite X 23.24



We are actively working to debrief Elite X from the 22.23 school year and look forward to bringing new exciting opportunities for teachers and staff in Oct!



Elite Academic Academy - Lucerne

Please join my meeting from your computer, tablet or smartphone. Join Zoom Meeting

<https://eliteacademic.zoom.us/j/97566202696?>

pwd=R2daZzJSNnZPNUV3Nk83K0diZXJtUT09 Meeting ID:
975 6620 2696 Passcode: 920373

August 3rd, 2023 at 9:00 am

43414 Business Park Drive, Temecula, CA 92590

23504 Lyons Avenue, Santa Clarita CA 91321

13255 Black Mountain Road San Diego, CA 92129

109 Don Carlos Way, Ojai, CA 93023



Elite Academic Academy - Lucerne August 3rd, 2023

Board Of Directors - Elite Academic Academy - Lucerne

Meeting Location

Due to the ongoing COVID-19 pandemic, this meeting will be held via teleconference.

Members of the public may observe the meeting and offer public comment using the

following dial-in numbers and/or internet link: Join Zoom Meeting
[https://eliteacademic.zoom.us/j/97566202696?](https://eliteacademic.zoom.us/j/97566202696?pwd=R2daZzJSNnZPNUV3Nk83K0diZXJtJT09)
pwd=R2daZzJSNnZPNUV3Nk83K0diZXJtJT09 Meeting ID: 975 6620
2696 Passcode: 920373

Time: 9:00 am

1.0 Call To Order

Roll Call:

Susan McDougal, Cody Simms, Kent Christensen

Present Present Present

Cody Susan

2.0 Approve/Adopt the Agenda

It is recommended the Board of Directors adopt as presented the agenda for the Board Meeting of August 3rd, 2023.

Motion: Second:

Vote: Susan; Aye, Cody; Aye, Kent; Aye.
Item carries 3-0.

3.0 Public Comment -Closed Session

The public has a right to comment on any items of the closed session agenda. Members of the public will be permitted to comment on any other item within the Board's jurisdiction under section 8.0 Public Comments at Board Meetings.

4.0 Adjourn to Closed Session

The board will consider and may act on any of the Closed Session matters listed in Agenda Item 13.0.

5.0 Closed Session

The Board will consider and may act on any of the following items in closed session; any action taken in closed session will be reported in open session as required by law.

Open (Time): 9:01 am

Close (Time): 9:13 am

5.1 Personnel Matters (With respect to every item of business to be discussed in closed session pursuant to Government Code Section 54957.6)

5.2 Employer/Employee Relations (With respect to every item of business to be discussed in closed session pursuant to Government Code Section 54957.6)

Time: 9:13 am

6.0 Pledge Of Allegiance

Led By: Susan McDougal

7.0 Open Session

8.0 Public Comment

Please submit a request to speak to the Board of Directors. Cards can be asked for by emailing galtamirano@eliteacademic.com. Please complete and return the form for agendized or non-agendized items, prior to the meeting. Not more than three (3) minutes are to be allotted to any one (1)

speaker, and no more than twenty (20) minutes on the same subject. This portion of the agenda is for comments, recognitions and reports to the Board and is not intended to be a question and answer period. If you have questions for the Board, please provide the Board President with a written copy and an administrator will provide answers at a later date. A request for disability-related modifications or accommodations in order to participate in the public meeting, including auxiliary aids or services, may be made to Ms. Meghan Freeman at mfreeman@eliteacademic.com at least 72 hours prior to the meeting.

9.0 General Functions

9.1 Informational Items

A. CEO Authorizer Report

[EAA-LU CEO Report JuneJuly 2023.pdf](#)

B. Elite X Update

[Elite X Video](#)

[EliteX Board Presentation 8.1.23 .pdf](#)

C. Cash Flow Update

[FY 23.24 EAA CASH FLOW_BUDGET - LU Cash Graph \(1\).pdf](#)

9.2 Consent Agenda

It is recommended that the board approve the following consent agenda items.

A. Meeting Minutes from June 14th , 2023

[EAA LU 06.14.23.pdf](#)

B. Warrant Register

[WarrantRegisterLU_July_2223 \(1\).pdf](#)

C. New Instructional Materials Community Partners

[Elite Academic Instructional Service Community Partner_July_2023 - VCI Community Partners.pdf](#)

D. New Educational Materials Community Partners

[Elite Academic Educational Materials Partner_July_2023.xlsx - EM Partners.pdf](#)

E. Job Descriptions

[JD - Administrative Assistant - Ed Services \(pending board approval\).pdf](#)

Cody Kent

Motion: Second:

Vote: Susan; Aye, Cody; Aye, Kent; Aye.
Item carries 3-0.

10.0 Personnel Services

10.1 Employee Contracts

It is recommended that the board ratify the following Employee Contracts for Elite Academic Academy - Lucerne.

[Certificated Employee Contracts LU.pdf](#)

[Temp Classified Employee Contracts LU.pdf](#)

[Temp Certificated Contracts.pdf](#)

10.2 Employee Contract Addendums

Cody Kent

Motion: Second:

Vote:

Susan; Aye, Cody; Aye, Kent; Aye.
Item carries 3-0.

Cody Kent

Motion: Second:

* Motion to open items 10.1 through 10.3 together:
Motion: Cody
Second: Kent

It is recommended that the board ratify the following Employee Contract Addendums for Elite Academic Academy - Lucerne.

[Certificated Employee Addendums LU.pdf](#)

[Temp Classified Employee Addendums LU \(1\).pdf](#)

[Temp Classified Addendums.pdf](#)

10.3 Employee Release and Resignations

It is recommended that the board ratify the following Employee Release and Resignations for Elite Academic Academy - Lucerne.

[Seperation Documents.pdf](#)

Vote:

Susan; Aye, Cody; Aye, Kent; Aye.
Item carries 3-0.

Cody Kent
Motion: Second:
Vote:

Susan; Aye, Cody; Aye, Kent; Aye.
Item carries 3-0.

* Motion to open items 11.1 through 11.2 together:
Motion: Cody
Second: Kent

11.0 Business Services

11.1 Lux Bus Invoices

It is recommended that the board retroactively approve the following Lux Bus Invoices for Elite Academic Academy - Lucerne.

[LuxBus Invoice.pdf](#)

[Lux Bus America - Receipt \(Payment No_ 66016\).pdf](#)

11.2 Zybek Proposal

It is recommended that the board approve the following Zybek Proposal for Elite Academic Academy - Lucerne.

[2023_Zybek Sofi_0706 proposal.pdf](#)

11.3 Abre Invoice

It is recommended that the board approve the following Abre Invoice for Elite Academic Academy - Lucerne.

[Abre Invoice 23.24.pdf](#)

11.4 Addendum to AMG Contract

It is recommended that the board approve the following Addendum to AMG Contract for Elite Academic Academy - Lucerne.

[7.31.23_AOC_Addendum.pdf](#)

11.5 Addendum to MOU

It is recommended that the board approve the following Addendum to MOU for Elite Academic Academy - Lucerne.

[6.7 MEMORANDUM OF UNDERSTANDING re Downey Unified School District - On-Site Enrollment - DWK Comments\(4064030.1\).pdf](#)

[6.7 MEMORANDUM OF UNDERSTANDING re Downey Unified School District - DWK Comments\(4064045.1\).pdf](#)

11.6 Elite Insurance Invoices

It is recommended that the board approve the following Elite Insurance Invoices for Elite Academic Academy - Lucerne.

[Elite Academic - ADD invoice \(1\).pdf](#)

[Elite Academic - August WC invoice.pdf](#)

[Elite Academic - Cyber invoice \(1\).pdf](#)

[Elite Academic - July WC invoice.pdf](#)

[Elite Academic - Lucerne ELL invoice \(2\).pdf](#)

[Elite Academic PKG-CUB binder \(3\).pdf](#)

11.7 August 2023 Professional Development Proposals

It is recommended that the board approve the following Aug. 2023 Professional Development Proposals for Elite Academic Academy -

Cody Kent
Motion: Second:
Vote:

Susan; Aye, Cody; Aye, Kent; Aye.
Item carries 3-0.

Cody Kent
Motion: Second:
Vote:

Susan; Aye, Cody; Aye, Kent; Aye.
Item carries 3-0.

Cody Kent
Motion: Second:
Vote:

Susan; Aye, Cody; Aye, Kent; Aye.
Item carries 3-0.

Cody Kent
Motion: Second:
Vote:

Susan; Aye, Cody; Aye, Kent; Aye.
Item carries 3-0.

Cody Kent
Motion: Second:
Vote:

Susan; Aye, Cody; Aye, Kent; Aye.
Item carries 3-0.

Cody Kent
Motion: Second:
Vote:

Susan; Aye, Cody; Aye, Kent; Aye.
Item carries 3-0.

Cody Kent
Motion: Second:
Vote:

Susan; Aye, Cody; Aye, Kent; Aye.
Item carries 3-0.

*Motion to change the name of item 11.5 to Memorandum of Understanding for DUSD:
Motion: Cody
Second: Kent
Vote: Susan; Aye, Cody; Aye, Kent; Aye.
Item carries 3-0.

Lucerne.

[Elite Academic Academy Estimate 7.24.23 \(1\).pdf](#)

[Encore AV Proposal- Final.pdf](#)

11.8 Apple Technology Equipment Invoices

It is recommended that the board approve the following Technology Equipment Invoices for Elite Academic Academy - Lucerne.

[Apple Tech Invoice EAA LU.pdf](#)

11.9 Accelerate Education Proposal

It is recommended that the board approve the following Accelerate Education Proposal for Elite Academic Academy - Lucerne.

[Accelerate Education Quote 23.24.pdf](#)

[Accelerate Education.pdf](#)

11.10 StrongMind Invoice

It is recommended that the board approve the following StrongMind Invoice I for Elite Academic Academy - Lucerne.

[StrongMind Invoice.pdf](#)

11.11 High Density Storage Proposal

It is recommended that the board approve the following High Density Storage Proposal for Elite Academic Academy - Lucerne.

[High Density Proposal.doc](#)

11.12 Loan Documents for EAA-Lucerne

It is recommended that the board approve the following loan documents to secure gap funding based on increased enrollment for the 2023.24 Elite Academic Academy- Lucerne school year.

[Annualized Interest Calculator - Financing Scenarios.pdf](#)

[FY24 August FE - EAA Lucerne.pdf](#)

[Ack Reso EAALU 8.3.23.pdf](#)

Cody Susan (Kent Abstains)

Motion: Second:

Vote:

Susan; Aye, Cody; Aye, Kent; Abstains.
Item carries 2-0.

Cody Kent

Motion: Second:

Vote:

Susan; Aye, Cody; Aye, Kent; Aye.
Item carries 3-0.

Cody Kent

Motion: Second:

Vote:

Susan; Aye, Cody; Aye, Kent; Aye.
Item carries 3-0.

Cody Kent

Motion: Second:

Vote:

Susan; Aye, Cody; Aye, Kent; Aye.
Item carries 3-0.

Cody Kent

Motion: Second:

Vote:

Susan; Aye, Cody; Aye, Kent; Aye.
Item carries 3-0.

Cody Kent

Motion: Second:

Vote:

Susan; Aye, Cody; Aye, Kent; Aye.
Item carries 3-0.

12.0 Educational Services/Policy Development

12.1 Public Records Act Request Fees Policy

It is recommended that the board approve the following Public Records Act Request Fees Policy for Elite Academic Academy - Lucerne.

[Board Policy_ Public Records Act Request Fee.pdf](#)

13.0 Report of Action Taken in Closed Session

The Board will report any action taken in closed session as required by law. During closed session the board took action to approve the release of employee number 03 with a severance package of 12 5 .00 equal to one month s additional pay.

14.0 Calendar

The next regularly scheduled meeting is September 7th, 2023 at 9:00 a.m.

15.0 Board Comments and Future Planning

16.0 Adjournment

In compliance with Government Code section 54957.5, open session materials distributed to Board Members for review prior to a meeting may be viewed at the eliteacademic.com or at the scheduled meeting. Board agenda back-up materials may also be requested by calling the School at 1(866)354-8302. In addition, if you would like a copy of any record related to an item on the agenda, please contact administration.

In compliance with the American with Disabilities Act, if you need special assistance, disability-related modifications or accommodations, including auxiliary aids or services, in order to participate in the public meetings of

Cody Kent

Motion: Second:

Vote:

Susan; Aye, Cody; Aye, Kent; Aye.
Item carries 3-0.

*Motion to open items 11.9-11.11 together:

Motion: Cody

Second: Kent

CFO explained to the board that this gap funding involves the factoring of receivables, rather than a LOC or loan. CFO further discussed the differences between these financing activities, and why the term "loan" is used here as a simple language convenience, rather than a specific definition of activity.

Time: 10:03 am

the charter's board of directors, please contact the School at 1(866) 354-8302. Notification 72 hours prior to the meeting will enable the School to make reasonable arrangements to ensure accommodation and accessibility to this meeting. Upon request, the School shall also make available this agenda and all other public records associated with this meeting in appropriate alternative formats for persons with a disability.

Staff Present:

Meghan Freeman

Tracy

Genia

Evan

Ashly

Gabriela

Melvin

Tamara

Allison

Katie

Jamie

Chelsie

Ashlea

Adam

Karen

Laura

Jen

Lauren

Antonette

Monique

Shirley

Teresa

Elite Academic Academy - Lucerne

Date	Vendor Name	Account Name	Ref Number	Amount
7/2/2023	SOFI STADIUM TOURS	Educational Services	CC 6481	\$4,250.00
7/2/2023	RIVERSIDE INSIGHTS	Technology Services & Software - Educat	CC 6481	\$2,502.50
7/2/2023	NEXTIVA*VOIP SERVICE	Phone / Internet / Website Fees	CC 6481	\$3,485.22
7/2/2023	WWW.TEACHWORKS.COM	Technology Services & Software - Educat	CC 6481	\$52.63
7/2/2023	WWW.TEACHWORKS.COM	Technology Services & Software - Educat	CC 6481	\$47.99
7/2/2023	ULINE *SHIP SUPPLIES	Postage & Delivery - Educational	CC 6481	\$2,975.98
7/2/2023	SOFI STADIUM TICKETS	Educational Services	CC 6481	\$3,825.92
7/3/2023	USPS.COM PICKUP ON DEMAND	Postage & Delivery - Business	CC 6481	\$26.50
7/4/2023	CALENDLY	Technology Services & Software - Busine	CC 6481	\$46.36
7/5/2023	CUBESMART 713	Rent - Facilities Lease	CC 6481	\$324.00
7/5/2023	ADOBE *800-833-6687	Technology Services & Software - Busine	CC 6481	\$599.70
7/5/2023	FEDEX578904300	Postage & Delivery - Educational	CC 6481	\$52.42
7/7/2023	EZCATERSUBWAY	Meals & Educational Services	CC 6481	\$12,729.60
7/7/2023	EZCATERLA ESQUINA MEX	Travel, Lodging & Meals	CC 6481	\$791.20
7/7/2023	MOLLY MAID OF SADDLEBACK	Janitorial Services	CC 6481	\$197.00
7/9/2023	WESTDRIFT MANHATTAN BE	Travel, Lodging & Meals	CC 6481	\$272.90
7/9/2023	WESTDRIFT MANHATTAN BE	Travel, Lodging & Meals	CC 6481	\$272.90
7/9/2023	FEDEX579074504	Postage & Delivery - Educational	CC 6481	\$36.64
7/9/2023	SQ *LA EATS AT SOFI STADI	Meals & Educational Services	CC 6481	\$1,432.20
7/9/2023	WESTDRIFT MANHATTAN BE	Travel, Lodging & Meals	CC 6481	\$272.90
7/9/2023	WESTDRIFT MANHATTAN BE	Travel, Lodging & Meals	CC 6481	\$523.00
7/9/2023	ENTERPRISE RENT-A-CAR	Travel, Lodging & Meals	CC 6481	\$305.66
7/9/2023	WESTDRIFT MANHATTAN BE	Travel, Lodging & Meals	CC 6481	\$534.40
7/9/2023	ZAPIER.COM/CHARGE	Technology Services & Software - Busine	CC 6481	\$448.50
7/11/2023	ENTERPRISE RAC10196962	Travel, Lodging & Meals	CC 6481	\$843.22
7/11/2023	VISTAPRINT	Materials & Supplies - Office	CC 6481	\$26.09
7/11/2023	ULINE *SHIP SUPPLIES	Postage & Delivery - Educational	CC 6481	\$3,902.06
7/12/2023	SCW-RESERVATIONS	Professional Development	CC 6481	\$263.50
7/12/2023	OC DEPT OF ED	Professional Development	CC 6481	\$549.00
7/13/2023	HILTON ANAHEIM COHO	Professional Development	CC 6481	\$210.83
7/13/2023	WWW.NXTLVL.IO	Educational Services	CC 6481	\$13,680.00
7/14/2023	HILTON ADVPURCH8002367113	Travel, Lodging & Meals	CC 6481	\$657.72
7/14/2023	MOLLY MAID OF SADDLEBACK	Janitorial Services	CC 6481	\$198.00
7/14/2023	AIRTABLE.COM/BILL	Technology Services & Software - Busine	CC 6481	\$264.00

Elite Academic Academy - Lucerne

7/14/2023	LUX BUS AMERICA	Educational Services	CC 6481	\$7,021.00
7/18/2023	KUDOBOARD	Misc. Operating Expense	CC 6481	\$5.99
7/18/2023	FEDEX579919851	Postage & Delivery - Educational	CC 6481	\$49.09
7/19/2023	Mailchimp	Technology Services & Software - Busine	CC 6481	\$100.00
7/19/2023	IN *ZYBEK	Educational Services	CC 6481	\$7,500.00
7/20/2023	VENNGAGE.COM	Marketing	CC 6481	\$936.00
7/23/2023	MOLLY MAID OF SADDLEBACK	Janitorial Services	CC 6481	\$198.00
7/24/2023	J2 EFAX SERVICES	Technology Services & Software - Busine	CC 6481	\$18.99
7/26/2023	KAJABI GROWTH MONTHLY	Technology Services & Software - Busine	CC 6481	\$199.00
7/26/2023	AMERICAN AIR0012466115824	Travel, Lodging & Meals	CC 6481	\$548.80
7/27/2023	ULINE *SHIP SUPPLIES	Postage & Delivery - Educational	CC 6481	\$273.24
7/28/2023	FEDEX580861294	Postage & Delivery - Educational	CC 6481	\$60.01
7/28/2023	MOLLY MAID OF SADDLEBACK	Janitorial Services	CC 6481	\$203.00
7/30/2023	APPLE.COM/US	Technology Equipment - Staff	CC 6481	\$21.00
7/30/2023	APPLE.COM/US	Technology Equipment - Staff	CC 6481	\$5,343.31
7/31/2023	ATH Academy	Educational Services	518018837	\$5,880.00
7/31/2023	Ambassador Media Group, LLC	Educational Services	7344	\$49,000.00
7/31/2023	Ambassador Media Group, LLC	Educational Services	7344	\$37,853.70
7/31/2023	JAMF Software, LLC	Technology Services & Software - Educat	INV329274	\$999.00
7/31/2023	CALENDLY	Technology Services & Software - Busine	CC 6481	\$17.44
8/1/2023	Neesha N. Rahim	Educational Services	36	\$22,756.00
8/1/2023	Neesha N. Rahim	Educational Services	26	\$11,500.00
8/1/2023	Neesha N. Rahim	Educational Services	18	\$7,500.00
8/1/2023	Raquel Noble	Educational Services	NOB063023	\$105.00
8/1/2023	SBCSS	STRS	007JulSTRS2023	\$49,000.00
8/1/2023	SBCSS	STRS	007JulSTRS2023	\$49,000.00
8/1/2023	SBCSS	STRS	007JulSTRS2023	\$40,618.97
8/3/2023	Amazon Capital Services, Inc.	Approved Core Curriculum, Teacher Man	1P67-64XN-9FJH	\$3,226.16
8/3/2023	Cecilia Rodriguez	Approved Core Curriculum, Teacher Man	ROD063023	\$26.29
8/3/2023	Mimeo.com, Inc	Approved Core Curriculum, Teacher Man	1922205	\$31,351.01
8/3/2023	Mimeo.com, Inc	Approved Core Curriculum, Teacher Man	1923416	\$6,483.28
8/3/2023	Pitney Bowes Global Financial Services LLC	Business Services	1023532684	\$131.07
8/3/2023	Valley Office Equipment**	Copier Lease, Service, Toner & Repair	IN2306-1480	\$15.61
8/3/2023	Amazon Capital Services, Inc.	Core Teaching/Student Supplies	13FR-36FK-YV49	\$125.00
8/3/2023	Amazon Capital Services, Inc.	Core Teaching/Student Supplies	1YTN-L1LV-9GMQ	\$18.83

Warrant Register: July 29 - Aug 31, 2023, July CC Charges

Elite Academic Academy - Lucerne

8/3/2023	Amazon Capital Services, Inc.	Core Teaching/Student Supplies	1JNT-GR64-HT11	\$19.10
8/3/2023	Amazon Capital Services, Inc.	Core Teaching/Student Supplies	1GXF-7HKX-R9QK	\$27.17
8/3/2023	Amazon Capital Services, Inc.	Core Teaching/Student Supplies	1X1G-CX7P-GN6P	\$684.72
8/3/2023	Amazon Capital Services, Inc.	Core Teaching/Student Supplies	1HT9-LD1C-DXND	\$21.75
8/3/2023	Candy Herrera	Core Teaching/Student Supplies	HER062823	\$99.39
8/3/2023	Derik Nelson	Core Teaching/Student Supplies	NEL062723	\$1,806.17
8/3/2023	Skinit Acquisition LLC	Core Teaching/Student Supplies	PSI-20025771	\$1,631.51
8/3/2023	Thomas S. Olson	Core Teaching/Student Supplies	OLS063023	\$21.89
8/3/2023	San Bernardino County Superintendent of	County STRS Fees	QLC-02.03-2023	\$900.00
8/3/2023	A+ In Home Tutors dba Firefly Tutors	Educational Services	537504300	\$140.00
8/3/2023	Abigail Inong	Educational Services	INO063023b	\$300.00
8/3/2023	Abigail Inong	Educational Services	INO063023a	\$300.00
8/3/2023	Abigail Inong	Educational Services	INO063023	\$300.00
8/3/2023	Amanda Urquidi	Educational Services	URQ040623	\$5.00
8/3/2023	Andrea Albano	Educational Services	ALB063023a	\$24.50
8/3/2023	Andrea Albano	Educational Services	ALB063023	\$24.50
8/3/2023	Andrea Albano	Educational Services	ALB063023b	\$160.00
8/3/2023	Andrea Albano	Educational Services	ALB063023f	\$50.00
8/3/2023	Andrea Albano	Educational Services	ALB063023e	\$300.00
8/3/2023	Andrea Albano	Educational Services	ALB063023d	\$40.00
8/3/2023	Andrea Albano	Educational Services	ALB063023c	\$240.00
8/3/2023	Branche Jones	Educational Services	116	\$1,500.00
8/3/2023	Carole Lynne Dance Studio	Educational Services	537504157	\$120.00
8/3/2023	Christy Swamidass	Educational Services	SWA063023	\$92.87
8/3/2023	Christy Swamidass	Educational Services	SWA063023c	\$92.87
8/3/2023	Christy Swamidass	Educational Services	SWA063023b	\$92.87
8/3/2023	Christy Swamidass	Educational Services	SWA063023a	\$92.87
8/3/2023	David Barnes	Educational Services	537503960	\$210.00
8/3/2023	Defend Your Legacy Basketball LLC	Educational Services	537504167	\$300.00
8/3/2023	Desert Baseball Network**	Educational Services	537504244	\$400.00
8/3/2023	Elizabeth Nicholson	Educational Services	NIC063023	\$220.00
8/3/2023	Frog Creek Adventure School	Educational Services	537504110	\$257.80
8/3/2023	Gladys Lugo	Educational Services	LUG063023	\$85.00
8/3/2023	Hollie Lambeth	Educational Services	LAM063023	\$115.00
8/3/2023	Jacob Smith	Educational Services	SMI063023c	\$58.33

Elite Academic Academy - Lucerne

8/3/2023	Jacob Smith	Educational Services	SMI063023d	\$58.33
8/3/2023	Jacob Smith	Educational Services	SMI063023e	\$58.33
8/3/2023	Jessica Rice	Educational Services	537504038	\$65.00
8/3/2023	Josefina Smith	Educational Services	SMI063023b	\$297.00
8/3/2023	Josefina Smith	Educational Services	SMI063023a	\$247.50
8/3/2023	Josefina Smith	Educational Services	SMI063023	\$396.00
8/3/2023	Lara Hansen	Educational Services	HAN063023	\$74.50
8/3/2023	Maria Martinez	Educational Services	MAR063023	\$43.00
8/3/2023	Maricela de la Rosa	Educational Services	DEL063023	\$172.50
8/3/2023	Marie Campbell	Educational Services	CAM063023a	\$315.00
8/3/2023	Marie Campbell	Educational Services	CAM063023	\$315.00
8/3/2023	Marie Jacklin	Educational Services	JAC032323b	\$23.00
8/3/2023	Matthew Moore	Educational Services	MOO063023a	\$50.00
8/3/2023	Matthew Moore	Educational Services	MOO063023	\$415.00
8/3/2023	Megan Nelson	Educational Services	NEL063023	\$536.25
8/3/2023	Melissa Cole	Educational Services	537503972	\$1,125.00
8/3/2023	Monique Waithe	Educational Services	WAI063023	\$450.00
8/3/2023	Nancy George	Educational Services	GEO063023	\$660.00
8/3/2023	Nicole Barnhart	Educational Services	537504111	\$1,365.00
8/3/2023	Nicole Long	Educational Services	LON063023	\$60.00
8/3/2023	Olivia Alarcon	Educational Services	ALA063023	\$125.00
8/3/2023	Perla Lacher	Educational Services	LAC063023a	\$65.00
8/3/2023	Perla Lacher	Educational Services	LAC063023	\$70.00
8/3/2023	Povi-Tamu Bryant	Educational Services	BRY062723	\$75.00
8/3/2023	Povi-Tamu Bryant	Educational Services	BRY062823	\$41.70
8/3/2023	Rage Entertainment Complex	Educational Services	537504231	\$96.00
8/3/2023	Rebeca Dominguez	Educational Services	DOM062823	\$202.50
8/3/2023	Robert Avetisian	Educational Services	AVE063023	\$100.00
8/3/2023	Rochelle Gunnarsson	Educational Services	GUN063023b	\$125.00
8/3/2023	Rochelle Gunnarsson	Educational Services	GUN063023	\$80.00
8/3/2023	Rochelle Gunnarsson	Educational Services	GUN063023a	\$75.00
8/3/2023	STEM Center USA	Educational Services	537504186	\$595.00
8/3/2023	Savannah Schuster	Educational Services	72823	\$800.00
8/3/2023	The Realm Creative Academy, LLC	Educational Services	537503908	\$366.34
8/3/2023	The Riding Academy	Educational Services	537503958	\$500.00

Elite Academic Academy - Lucerne

8/3/2023	Tiffany Pereda	Educational Services	PER063023	\$65.00
8/3/2023	Top Billing Entertainment Performance Ac	Educational Services	537504379	\$280.00
8/3/2023	Universal Martial Arts Centers, LLC	Educational Services	537503959	\$260.00
8/3/2023	Wendy Antonowsky	Educational Services	ANTO63023	\$400.00
8/3/2023	Anthem Blue Cross	Health Insurance	2.02308E+11	\$23,924.71
8/3/2023	Guardian	Health Insurance	008Aug2023	\$4,976.04
8/3/2023	Blank Rome LLP	Legal Fees	2127091	\$59.50
8/3/2023	Bagger Sports	Marketing	5301	\$12,072.38
8/3/2023	Bagger Sports	Marketing	5305	\$1,245.97
8/3/2023	FlipSwitch Marketing LLC	Marketing	INVM368	\$8,337.02
8/3/2023	Amazon Capital Services, Inc.	Materials & Supplies - Office	1RN4-GVJJ-K14Q	\$111.45
8/3/2023	Amazon Capital Services, Inc.	Materials & Supplies - Office	1QFD-4LHT-64T3	\$46.39
8/3/2023	Amazon Capital Services, Inc.	Materials & Supplies - Office	1H43-Q7L4-1TQD	\$206.31
8/3/2023	Amazon Capital Services, Inc.	Materials & Supplies - Office	1HC6-FDK1-N74F	\$27.62
8/3/2023	Staples Business Credit	Materials & Supplies - Office	7902659885-0-1	\$193.53
8/3/2023	Frontier	Phone / Internet / Website Fees	008Aug2023	\$384.96
8/3/2023	Thomas S. Olson	Postage & Delivery - Educational	OLS063023	\$11.65
8/3/2023	Whoop, Inc.	Technology Equipment - Students	6343	\$49,000.00
8/3/2023	Whoop, Inc.	Technology Equipment - Students	6343	\$16,912.50
8/3/2023	Sarah Critchfield	Professional Development	CRI062723	\$23.67
8/3/2023	Teresa Fleming	Professional Development	FLE062723	\$13.04
8/3/2023	Adam Bruno	Special Education Services	5	\$450.00
8/3/2023	Specialized Therapy Services, Inc.	Special Education Services	ELAA01-0623	\$1,078.75
8/3/2023	TSW Therapy, Inc.	Special Education Services	1453	\$1,218.75
8/3/2023	TSW Therapy, Inc.	Special Education Services	1454	\$1,722.50
8/3/2023	TSW Therapy, Inc.	Special Education Services	1452	\$2,495.00
8/3/2023	The Speech and Language Group, Inc	Special Education Services	45078	\$718.75
8/3/2023	Amazon Capital Services, Inc.	Technology Equipment - Staff	1LKY-1NLV-CMLP	\$150.45
8/3/2023	Amazon Capital Services, Inc.	Technology Equipment - Staff	1631-MPJL-NWCT	\$46.75
8/3/2023	Staples Technology Solutions	Technology Equipment - Staff	PAX214	\$1,666.67
8/3/2023	OPS	Technology Services & Software - Educat	2477	\$2,322.24
8/3/2023	ParentSquare, Inc.	Technology Services & Software - Educat	SI-005088	\$4,011.00
8/3/2023	School Pathways Holdings, LLC	Technology Services & Software - Educat	140-INV4929	\$6,836.34
8/3/2023	Cheryl McCormick	Travel, Lodging & Meals	MCC072623	\$664.82
8/3/2023	Derik Nelson	Travel, Lodging & Meals	NEL062723	\$193.93

Elite Academic Academy - Lucerne

8/3/2023	Southern California Edison	Utilities - Gas/Electric/Water	008AugSCE2023LU	\$343.88
8/9/2023	Nexelm LLC	Rent - Facilities Lease	ELM203_080123	\$2,558.60
8/9/2023	Wildomar Valley Wood Products, Inc., Defi	Rent - Facilities Lease	08Aug2023Lease	\$2,752.50
8/9/2023	SBCSS	STRS	007JulSTRS2023a	\$49,000.00
8/11/2023	Cody Simms	Board Stipends - Attendance	08Aug2023LU	\$300.00
8/11/2023	Kent Christensen	Board Stipends - Attendance	08Aug2023LU	\$300.00
8/11/2023	Susan Ann McDougal	Board Stipends - Attendance	08Aug2023LU	\$300.00
8/11/2023	Jostens	Core Teaching/Student Supplies	31693465	\$33.83
8/11/2023	Jostens	Core Teaching/Student Supplies	31698406	\$22.25
8/11/2023	Knight Security & Fire Systems	Fire, Alarm & Pest control	172516	\$20.00
8/11/2023	Great American Insurance Group	General Liability Insurance	008Aug2023LU	\$3,117.67
8/11/2023	School Pathways Holdings, LLC	Technology Services & Software - Educat	140-INV5264	\$751.05
8/11/2023	Kate Curtis	UNALLOCATED WAGES	81423	\$2,821.72
8/14/2023	Amazon Capital Services, Inc.	Approved Core Curriculum, Teacher Man	13HQ-4LX7-RVKC	\$124.33
8/14/2023	Amazon Capital Services, Inc.	Approved Core Curriculum, Teacher Man	1LC7-VMYM-WNGT	\$43.69
8/14/2023	Amazon Capital Services, Inc.	Approved Core Curriculum, Teacher Man	1NXN-GLNN-T73T	\$50.51
8/14/2023	Amazon Capital Services, Inc.	Approved Core Curriculum, Teacher Man	1L31-TQVC-VCXC	\$8.53
8/14/2023	Amazon Capital Services, Inc.	Approved Core Curriculum, Teacher Man	1DX3-TPJK-VDY6	\$11.10
8/14/2023	Amazon Capital Services, Inc.	Approved Core Curriculum, Teacher Man	16FR-F39M-W6W3	\$7.87
8/14/2023	Amazon Capital Services, Inc.	Approved Core Curriculum, Teacher Man	1PXR-KLMN-4WYD	\$43.69
8/14/2023	Amazon Capital Services, Inc.	Approved Core Curriculum, Teacher Man	1PXR-KLMN-6LYL	\$43.69
8/14/2023	Amazon Capital Services, Inc.	Approved Core Curriculum, Teacher Man	1HN1-TRXY-7WQH	\$9.80
8/14/2023	Amazon Capital Services, Inc.	Approved Core Curriculum, Teacher Man	1YJP-HX7Q-4K9M	\$28.23
8/14/2023	Amazon Capital Services, Inc.	Approved Core Curriculum, Teacher Man	1WQH-XX3Q-43XM	\$16.78
8/14/2023	Amazon Capital Services, Inc.	Approved Core Curriculum, Teacher Man	1WKM-17V3-4NYV	\$31.41
8/14/2023	Mimeo.com, Inc	Approved Core Curriculum, Teacher Man	1925325	\$4,187.67
8/14/2023	Prime Educational Solutions	Back Office Fees	1092	\$114,046.69
8/14/2023	Document Tracking Services	Business Services	9259005	\$397.50
8/14/2023	Pitney Bowes Global Financial Services LLC	Business Services	3106211601	\$104.45
8/14/2023	Amazon Capital Services, Inc.	Core Teaching/Student Supplies	13HQ-4LX7-RVKC	\$135.99
8/14/2023	Amazon Capital Services, Inc.	Core Teaching/Student Supplies	1VTG-XPQ7-WQ6C	\$158.83
8/14/2023	Amazon Capital Services, Inc.	Core Teaching/Student Supplies	1GVN-4G7R-TM3G	\$42.30
8/14/2023	Amazon Capital Services, Inc.	Core Teaching/Student Supplies	1NXN-GLNN-T73T	\$61.27
8/14/2023	Amazon Capital Services, Inc.	Core Teaching/Student Supplies	19FM-JHY6-MQL4	\$162.65
8/14/2023	Amazon Capital Services, Inc.	Core Teaching/Student Supplies	1VG7-9D6Q-3MNN	\$141.77

Elite Academic Academy - Lucerne

8/14/2023	Amazon Capital Services, Inc.	Core Teaching/Student Supplies	1TXV-Q4WM-MNR9	\$33.22
8/14/2023	Amazon Capital Services, Inc.	Core Teaching/Student Supplies	1WNL-7XK1-1X4X	\$167.25
8/14/2023	Amazon Capital Services, Inc.	Core Teaching/Student Supplies	1NXN-GLNN-CV3C	\$54.71
8/14/2023	Amazon Capital Services, Inc.	Core Teaching/Student Supplies	1MPJ-X34Y-9HT4	\$48.94
8/14/2023	Amazon Capital Services, Inc.	Core Teaching/Student Supplies	1J4Y-W61M-9N9J	\$60.28
8/14/2023	Amazon Capital Services, Inc.	Core Teaching/Student Supplies	1XTK-JM3P-C6J7	\$191.49
8/14/2023	Amazon Capital Services, Inc.	Core Teaching/Student Supplies	197G-C7H1-639W	\$125.62
8/14/2023	Amazon Capital Services, Inc.	Core Teaching/Student Supplies	1WFM-JTPN-3RTQ	\$32.58
8/14/2023	Amazon Capital Services, Inc.	Core Teaching/Student Supplies	1JC7-F6JM-3QCD	\$71.60
8/14/2023	Amazon Capital Services, Inc.	Core Teaching/Student Supplies	17NN-GGPC-44RG	\$33.93
8/14/2023	San Bernardino County Superintendent of	County STRS Fees	QLC-04-2023	\$450.00
8/14/2023	Amrit Kaur	Educational Services	KAU072023	\$20.00
8/14/2023	Branche Jones	Educational Services	117	\$1,500.00
8/14/2023	Cece's Artistic Touch	Educational Services	562	\$25.00
8/14/2023	Cheryl McCormick	Educational Services	20	\$3,312.00
8/14/2023	Prime Educational Solutions	Educational Services	1092	\$8,500.00
8/14/2023	Mary R. Pierce, Esq.	Legal Fees	202329	\$506.25
8/14/2023	Amazon Capital Services, Inc.	Professional Development	13XQ-CCYT-9944	\$230.36
8/14/2023	San Diego County Office of Education	Professional Development	099-042384	\$350.00
8/14/2023	Life Storage	Rent - Facilities Lease	007Jul23#658b	\$116.50
8/14/2023	Prime Educational Solutions	Special Education Services	1090	\$13,123.24
8/14/2023	Amazon Capital Services, Inc.	Technology Equipment - Staff	1XMK-HYPY-1XM6	\$6,636.05
8/14/2023	Amazon Capital Services, Inc.	Technology Equipment - Staff	1LQ7-1HFN-9994	\$459.74
8/14/2023	Amazon Capital Services, Inc.	Technology Equipment - Staff	1TPP-L4HV-NQKC	\$734.08
8/21/2023	Savannah Schuster	Educational Services	81123	\$800.00
8/24/2023	Elite Athlete Services, LLC.	Educational Services	72623	\$160.00
8/24/2023	Bagger Sports	Marketing	5335	\$11,287.46
8/24/2023	Bagger Sports	Marketing	5328	\$2,100.50
8/25/2023	All About Learning Press, Inc.	Approved Core Curriculum, Teacher Man	916233	\$142.20
8/25/2023	All About Learning Press, Inc.	Approved Core Curriculum, Teacher Man	916304	\$139.20
8/25/2023	Amazon Capital Services, Inc.	Approved Core Curriculum, Teacher Man	199K-DCKR-N6DC	\$51.69
8/25/2023	Amazon Capital Services, Inc.	Approved Core Curriculum, Teacher Man	114W-QKVP-N1XJ	\$71.61
8/25/2023	Amazon Capital Services, Inc.	Approved Core Curriculum, Teacher Man	1VRF-VLVD-6HHL	\$351.78
8/25/2023	Amazon Capital Services, Inc.	Approved Core Curriculum, Teacher Man	1J6G-9H3G-9TYJ	\$155.16
8/25/2023	Amazon Capital Services, Inc.	Approved Core Curriculum, Teacher Man	1MWX-GQLQ-1DL1	\$84.63

Elite Academic Academy - Lucerne

8/25/2023	Amazon Capital Services, Inc.	Approved Core Curriculum, Teacher Man	1VR7-7NHK-741R	\$102.17
8/25/2023	Amazon Capital Services, Inc.	Approved Core Curriculum, Teacher Man	134Q-CYMT-KLY4	\$82.80
8/25/2023	Amazon Capital Services, Inc.	Approved Core Curriculum, Teacher Man	1KPN-JKCJ-FW97	\$79.33
8/25/2023	Amazon Capital Services, Inc.	Approved Core Curriculum, Teacher Man	16KX-DJYW-TPV3	\$47.74
8/25/2023	Amazon Capital Services, Inc.	Approved Core Curriculum, Teacher Man	1DJC-RJTK-CFYN	\$31.52
8/25/2023	Amazon Capital Services, Inc.	Approved Core Curriculum, Teacher Man	1VDD-7GXX-4MWC	\$29.04
8/25/2023	Amazon Capital Services, Inc.	Approved Core Curriculum, Teacher Man	1KRV-6M96-G7JX	\$21.49
8/25/2023	Amazon Capital Services, Inc.	Approved Core Curriculum, Teacher Man	1YDK-N161-FCGR	\$22.92
8/25/2023	Beautiful Feet Books, Inc.	Approved Core Curriculum, Teacher Man	20405	\$168.12
8/25/2023	Beautiful Feet Books, Inc.	Approved Core Curriculum, Teacher Man	20401	\$137.77
8/25/2023	Beautiful Feet Books, Inc.	Approved Core Curriculum, Teacher Man	20447	\$254.46
8/25/2023	BookShark, LLC	Approved Core Curriculum, Teacher Man	BI0024304	\$371.70
8/25/2023	Edmentum, INC.	Approved Core Curriculum, Teacher Man	INV316369	\$4,387.50
8/25/2023	Frog Street Press, LLC	Approved Core Curriculum, Teacher Man	0245186-IN	\$339.85
8/25/2023	Gravitas Publications, Inc	Approved Core Curriculum, Teacher Man	GS-383653	\$105.82
8/25/2023	Institute for Excellence in Writing	Approved Core Curriculum, Teacher Man	1037140	\$218.59
8/25/2023	Institute for Excellence in Writing	Approved Core Curriculum, Teacher Man	1038278	\$327.34
8/25/2023	Learning Without Tears	Approved Core Curriculum, Teacher Man	INV183546	\$31.14
8/25/2023	Mimeo.com, Inc	Approved Core Curriculum, Teacher Man	1926506	\$379.36
8/25/2023	Rainbow Resource Center	Approved Core Curriculum, Teacher Man	4130033	\$280.67
8/25/2023	Rainbow Resource Center	Approved Core Curriculum, Teacher Man	4127693	\$117.42
8/25/2023	Rainbow Resource Center	Approved Core Curriculum, Teacher Man	4127686	\$77.66
8/25/2023	Rainbow Resource Center	Approved Core Curriculum, Teacher Man	4130037	\$56.11
8/25/2023	Rainbow Resource Center	Approved Core Curriculum, Teacher Man	4130034	\$24.20
8/25/2023	Rainbow Resource Center	Approved Core Curriculum, Teacher Man	4130030	\$149.19
8/25/2023	Rainbow Resource Center	Approved Core Curriculum, Teacher Man	4130027	\$16.07
8/25/2023	Rainbow Resource Center	Approved Core Curriculum, Teacher Man	4129934	\$401.45
8/25/2023	Rainbow Resource Center	Approved Core Curriculum, Teacher Man	4130024	\$160.09
8/25/2023	Rosetta Stone, LLC c/o IXL Learning	Approved Core Curriculum, Teacher Man	11951481	\$2,963.25
8/25/2023	Studies Weekly	Approved Core Curriculum, Teacher Man	483786	\$43.05
8/25/2023	Studies Weekly	Approved Core Curriculum, Teacher Man	484126	\$43.05
8/25/2023	Teacher Synergy LLC	Approved Core Curriculum, Teacher Man	235143407	\$97.71
8/25/2023	Teacher Synergy LLC	Approved Core Curriculum, Teacher Man	235613262	\$40.00
8/25/2023	Well Trained Mind Press	Approved Core Curriculum, Teacher Man	INV2300548	\$9.95
8/25/2023	Valley Office Equipment**	Copier Lease, Service, Toner & Repair	IN2307-1357	\$45.93

Elite Academic Academy - Lucerne

8/25/2023	Amazon Capital Services, Inc.	Core Teaching/Student Supplies	16KX-DJYW-N6FY	\$131.91
8/25/2023	Amazon Capital Services, Inc.	Core Teaching/Student Supplies	1N1F-CMRR-64CV	\$15.21
8/25/2023	Amazon Capital Services, Inc.	Core Teaching/Student Supplies	1MJ3-HN43-K37G	\$175.92
8/25/2023	Amazon Capital Services, Inc.	Core Teaching/Student Supplies	1VDD-7GXX-XPVL	\$3,217.40
8/25/2023	Amazon Capital Services, Inc.	Core Teaching/Student Supplies	1XP7-CFJQ-34TD	\$163.05
8/25/2023	Amazon Capital Services, Inc.	Core Teaching/Student Supplies	1V4R-4RT4-3CKC	\$226.64
8/25/2023	KiwiCo, Inc.	Core Teaching/Student Supplies	KE-423B4D9C08052334	\$190.12
8/25/2023	Mimeo.com, Inc	Core Teaching/Student Supplies	1928453	\$2,204.37
8/25/2023	Neesha N. Rahim	Educational Services	28	\$7,500.00
8/25/2023	Neesha N. Rahim	Educational Services	38	\$11,500.00
8/25/2023	Nicole the Math Lady, LLC	Educational Services	6371	\$59.00
8/25/2023	Nicole the Math Lady, LLC	Educational Services	6376	\$149.00
8/25/2023	Nicole the Math Lady, LLC	Educational Services	6375	\$149.00
8/25/2023	Certifix Live Scan	Fingerprinting	77856	\$189.88
8/25/2023	Department of Justice	Fingerprinting	675611	\$120.50
8/25/2023	Hatch & Cesario, Attorneys-at-Law	Legal Fees	15344	\$454.00
8/25/2023	Hatch & Cesario, Attorneys-at-Law	Legal Fees	15342	\$112.00
8/25/2023	Hatch & Cesario, Attorneys-at-Law	Legal Fees	15343	\$345.50
8/25/2023	Hatch & Cesario, Attorneys-at-Law	Legal Fees	15341	\$653.50
8/25/2023	FlipSwitch Marketing LLC	Marketing	INVM365	\$7,735.19
8/25/2023	FlipSwitch Marketing LLC	Marketing	INVM371	\$7,819.40
8/25/2023	Video Approach	Marketing	2023-025	\$2,085.00
8/25/2023	Amazon Capital Services, Inc.	Materials & Supplies - Office	1R3D-KLXR-WTRL	\$96.38
8/25/2023	Staples Business Credit	Materials & Supplies - Office	7902659885-0-2	\$20.97
8/25/2023	Frontier	Phone / Internet / Website Fees	009Sept2023	\$384.96
8/25/2023	Amazon Capital Services, Inc.	Professional Development	1FDQ-R9XM-VJ11	\$121.76
8/25/2023	Amazon Capital Services, Inc.	Professional Development	1FWF-W16Y-WG49	\$246.64
8/25/2023	Amazon Capital Services, Inc.	Professional Development	1G1T-1R7G-XCK9	\$25.28
8/25/2023	Amazon Capital Services, Inc.	Professional Development	19TK-4QMD-CW9K	\$126.13
8/25/2023	Scenario Learning	Professional Development	INV79418	\$289.82
8/25/2023	Marco Frias	Repairs & Minor Site Improvements	20230811	\$700.00
8/25/2023	NCS Pearson, Inc.	Special Education Services	22218613	\$827.82
8/25/2023	TSW Therapy, Inc.	Special Education Services	1463	\$331.25
8/25/2023	TSW Therapy, Inc.	Special Education Services	1462	\$397.50
8/25/2023	Amazon Capital Services, Inc.	Technology Equipment - Staff	1ML1-KT7W-L6W9	\$640.59

Elite Academic Academy - Lucerne

8/25/2023	Abre.io Inc	Technology Services & Software - Educat	ABRE000794	\$11,546.94
8/25/2023	JAMF Software, LLC	Technology Services & Software - Educat	INV330193	\$360.00
8/25/2023	OPS	Technology Services & Software - Educat	2482	\$1,334.23
8/25/2023	School Pathways Holdings, LLC	Technology Services & Software - Educat	140-INV5301	\$4,422.08
8/25/2023	Laura Spencer	Travel, Lodging & Meals	SPE080123	\$129.91
8/29/2023	ATH Academy	Educational Services	518132189	\$3,960.00
8/29/2023	Elite Spirit Cheer	Educational Services	INV-12345-2	\$32,523.17
8/29/2023	Savannah Schuster	Educational Services	82523	\$800.00
8/29/2023	FIS LOCKBOX OPERATIONS ATTN:PITNEY B	Postage & Delivery - Educational	020.LU	\$7,000.00
8/29/2023	SBCSS	STRS	008AugSTRS2023	\$49,000.00
8/29/2023	SBCSS	STRS	008AugSTRS2023	\$49,000.00
8/29/2023	SBCSS	STRS	008AugSTRS2023	\$49,000.00
8/29/2023	SBCSS	STRS	008AugSTRS2023	\$49,000.00
8/29/2023	SBCSS	STRS	008AugSTRS2023	\$21,490.87
8/30/2023	Nicole Long	Educational Services	LON081823	\$350.00
8/31/2023	Shanae Brown	UNALLOCATED WAGES	90123	\$903.58

Elite Academic Academy - Instructional Service Community Partner - August 2023

<u>Partner Name</u>	<u>Description of Services</u>	<u>Link to EAA VCI 2023-2024 Applications</u>
PanPan Bear Academy LLC	Chinese (Mandarin) classes for K-12 students	PanPan Bear Academy LLC EAA VCI 23-24 Application
Suzanne Lockyer	Science, Language Arts, Government/Civics classes and tutoring for these subjects	Suzanne Lockyer EAA VCI 23-24 Application
Jessica Dvorkin (Victory Tutoring)	Tutoring in all subjects	Jessica Dvorkin (Victory Tutoring) EAA VCI 23-24 Application
High School Math Live	Live and interactive math classes; tutoring; Brush Up on Math Workshops; SAT/ACT Test Prep	High School Math Live EAA VCI 23-24 Application
Some STEAM 4 Fun	Math and Science tutoring, engineering electives, sewing, 3D printing	Some STEAM 4 Fun EAA VCI 23-24 Application
Code Ninjas Murrieta	Coding, robotics, and STEM classes	Code Ninjas Murrieta EAA VCI 23-24 Application
Mathnasium of Anaheim Hills	Math tutoring	Mathnasium of Anaheim Hills EAA VCI 23-24 Application
Academy of Music and Arts - Murrieta and Menifee (Riverside County)	Music lessons, drama and musical theatre	Academy of Music and Arts - Murrieta and Menifee (Murrieta Location) EAA VCI 23-24 Application
Academy of Music and Arts - Murrieta and Menifee (Riverside County)	Music lessons, drama and musical theatre	Academy of Music and Arts - Murrieta and Menifee (Menifee Location) EAA VCI 23-24 Application
Temecula Music Academy	Piano, guitar, drums, violin, ukulele, and voice lessons	Temecula Music Academy EAA VCI 23-24 Application
Learning With Leslie	Enrichment classes for K-6th in English/Language Arts and Mathematics	Learning With Leslie EAA VCI 23-24 Application
Temecula Valley Driving School	Online driver's education and Behind the wheel lessons	Temecula Valley Driving School EAA VCI 23-24 Application
Creative Stem and Arts	Tech and digital arts-based programming for Kindergarten-12th grade (game development, computer programming, computer science, animation, content creation and more)	Creative Stem and Arts EAA VCI 23-24 Application

Elite Academic Academy - Educational Material Partners - August 2023

Partner Name	Product Description	Link to EAA EMR 2023-2024 Applications
Crush Publishing, Inc. Hive Online Presence Management LLC dba Blossom and Root Home Education	Phonics early-reader books and workbooks Secular homeschool curriculum for Science, Literature, Nature Study, Arts and US History)	Crush Publishing, Inc. EAA EMR 23-24 Application Hive Online Presence Management LLC dba Blossom and Root Home Education EAA EMR 23-24 Application
Kids Art Box High School Math Live	Art kits including supplies, instructions, and online videos Self-paced classes with recorded instruction	Kids Art Box EAA EMR 23-24 Application High School Math Live EAA EMR 23-24 Application
So Simple Learning	Digital sight word program, video/printable manuals and cards	So Simple Learning EAA EMR 23-24 Application
History Unboxed	History curriculum (Ancient History, Middle Ages, American History)	History Unboxed EAA EMR 23-24 Application
Origins Curriculum Inc	Elementary school curriculum	Origins Curriculum Inc EAA EMR 23-24 Application
IXL Learning, Inc. Crunchlabs	Online educational materials Buildable STEM toy subscription service (Annual subscription - 12 months; boxes ship monthly)	IXL Learning, Inc. EAA EMR 23-24 Application CrunchLabs EAA EMR 23-24 Application

Employee_Code	Position	Payroll_Profile_Desc	Hire_Date	Salary_Rate_Per_Hour	Annual_Salary
0429	Teacher of Record - Homeschool (ft sal ex)	ELITE ACADEMIC ACADEMY LUCERNE	08/14/2023		71,175.00
0507	Teacher of Record - Virtual (ft sal ex)	ELITE ACADEMIC ACADEMY LUCERNE	08/14/2023		71,175.00
0414	Teacher of Record - Flex (ft sal ex)	ELITE ACADEMIC ACADEMY LUCERNE	08/14/2023		65,325.00
0511	Teacher of Record - Homeschool (ft sal ex)	ELITE ACADEMIC ACADEMY LUCERNE	08/14/2023		71,175.00
0517	Academic Innovation Temp IT Support	ELITE ACADEMIC ACADEMY LUCERNE	09/01/2023	20.00	35,840.00
0438	Teacher of Record - Flex (ft sal ex)	ELITE ACADEMIC ACADEMY LUCERNE	08/14/2023		65,325.00
0510	Director of Virtual	ELITE ACADEMIC ACADEMY LUCERNE	08/14/2023		145,000.00
0448	Teacher of Record - Homeschool (ft sal ex)	ELITE ACADEMIC ACADEMY LUCERNE	08/14/2023		71,175.00
0445	Teacher of Record - Homeschool (ft sal ex)	ELITE ACADEMIC ACADEMY LUCERNE	08/14/2023		71,175.00
0440	Teacher of Record - Homeschool (ft sal ex)	ELITE ACADEMIC ACADEMY LUCERNE	08/14/2023		65,325.00
0410	Special Education - Education Specialist (ft sal ex)	ELITE ACADEMIC ACADEMY LUCERNE	08/14/2023		90,090.00
0515	Lead DUSD On-Site Teacher of Record - Virtual	ELITE ACADEMIC ACADEMY LUCERNE	08/21/2023		80,266.67
0514	Part-Time Speech and Language Pathologist	ELITE ACADEMIC ACADEMY LUCERNE	08/28/2023	63.13	36,931.05

Employee_Code	Position	Payroll_Profile_Desc	Change of Relationship Date	Salary_Rate_Per_Hour	Annual_Salary
23240061	Chief Academic Innovations Officer	ELITE ACADEMIC ACADEMY LUCERNE	retro to 7/1/2023		\$200,000.00
23240003	Chief Student Development Officer	ELITE ACADEMIC ACADEMY LUCERNE	retro to 7/1/2023		\$190,000.00
23240470	Temp - Community Relations Clerk	ELITE ACADEMIC ACADEMY LUCERNE	8/30/2023	\$18.00	\$16,128.00
23240469	Temp - Community Relations Clerk	ELITE ACADEMIC ACADEMY LUCERNE	8/30/2023	\$18.00	\$16,128.00
23240515	Lead DUSD On-Site Teacher of Record	ELITE ACADEMIC ACADEMY LUCERNE	8/12/2023		\$3,600.00

Employee_Code	Position	Payroll_Profile_Desc	Change of Relationship Date	Salary_Rate_Per_Hour	Annual_Salary
23240420	Temp Onboarding Specialist	ELITE ACADEMIC ACADEMY LUCERNE			\$39,520.00
23240332	Teacher of Record-Flex	ELITE ACADEMIC ACADEMY LUCERNE	8/9/2023		\$86,665.60
23240317	Teacher of Record-Homeschool	ELITE ACADEMIC ACADEMY LUCERNE	8/24/2023	\$48.36	\$36,560.16

Classified Separations			
EE Code	Term Date	22/23 Charter	Position Title
23240425	2023-08-31	Lucerne	Onboarding Specialist
Certificated Separations			
Name	Term Date	22/23 Charter	Position Title
23240337	2023-08-11	Lucerne	Teacher of Record-Virtual
23240348	2023-07-31	Lucerne	Director of Virtual Academy
23240389	2023-07-31	Lucerne	Guidance Counselor
23.24 Temporary Level Up Separations			
EE Code	Term Date	22/23 Charter	Position Title
23240476	2023-08-10	Lucerne	DUSD Content Teacher
23240304	2023-08-10	Lucerne	DUSD Content Teacher
23240494	2023-08-10	Lucerne	DUSD On Site Engagement Coach Peak Performance
23240483	2023-08-10	Lucerne	DUSD Content Teacher
23240490	2023-08-10	Lucerne	DUSD On Site Engagement Coach Peak Performance
23240488	2023-08-10	Lucerne	DUSD On Site Engagement Coach Peak Performance
23240465	2023-08-10	Lucerne	DUSD Content Teacher
23240501	2023-08-10	Lucerne	DUSD On Site Engagement Coach Peak Performance
23240364	2023-08-10	Lucerne	Coach/Content Teacher
23240463	2023-08-10	Lucerne	Instructional Aide
23240455	2023-08-10	Lucerne	Coach/Content Teacher
23240415	2023-08-10	Lucerne	Instructional Aide
23240449	2023-08-10	Lucerne	TOR
23240497	2023-08-10	Lucerne	DUSD On Site Engagement Coach Peak Performance
23240464	2023-08-10	Lucerne	TOR
23240426	2023-08-10	Lucerne	Instructional Aide
23240305	2023-08-10	Lucerne	Coach/Content Teacher
23240453	2023-08-10	Lucerne	Coach/Content Teacher
23240491	2023-08-10	Lucerne	DUSD On Site Engagement Coach Peak Performance
23240467	2023-08-10	Lucerne	DUSD Content Teacher
23240460	2023-08-10	Lucerne	Coach/Content Teacher
23240447	2023-08-10	Lucerne	Instructional Aide
23240454	2023-08-10	Lucerne	Coach/Content Teacher
23240450	2023-08-10	Lucerne	Instructional Aide
23240472	2023-08-10	Lucerne	DUSD Content Teacher
23240492	2023-08-10	Lucerne	DUSD On Site Engagement Coach Peak Performance

23240478	2023-08-10	Lucerne	DUSD Content Teacher
23240477	2023-08-10	Lucerne	DUSD Content Teacher
23240479	2023-08-10	Lucerne	DUSD Content Teacher
23240309	2023-08-10	Lucerne	Instructional Aide
23240458	2023-08-10	Lucerne	TOR
23240459	2023-08-10	Lucerne	Coach/Content Teacher
23240498	2023-08-10	Lucerne	DUSD On Site Engagement Coach Peak Performance
23240436	2023-08-10	Lucerne	TOR
23240493	2023-08-10	Lucerne	DUSD Content Teacher
23240424	2023-08-10	Lucerne	TOR
23240503	2023-08-10	Lucerne	DUSD Admin Assistant
23240504	2023-08-10	Lucerne	DUSD On Site Engagement Coach Peak Performance
23240486	2023-08-10	Lucerne	DUSD Content Teacher
23240481	2023-08-10	Lucerne	DUSD Content Teacher
23240474	2023-08-10	Lucerne	On-Site Lead
23240485	2023-08-10	Lucerne	DUSD Content Teacher
23240480	2023-08-10	Lucerne	DUSD Content Teacher
23240499	2023-08-10	Lucerne	DUSD On Site Engagement Coach Peak Performance
23240433	2023-08-10	Lucerne	Instructional Aide
23240434	2023-08-10	Lucerne	Instructional Aide
23240482	2023-08-10	Lucerne	DUSD Content Teacher
23240432	2023-08-10	Lucerne	On-Site Lead
23240468	2023-08-10	Lucerne	DUSD Content Teacher
23240495	2023-08-10	Lucerne	DUSD On Site Engagement Coach Peak Performance
23240368	2023-08-10	Lucerne	Coach/Content Teacher
23240444	2023-08-10	Lucerne	Coach/Content Teacher
23240466	2023-08-10	Lucerne	DUSD Content Teacher
23240473	2023-08-10	Lucerne	DUSD Content Teacher
23240487	2023-08-10	Lucerne	DUSD Content Teacher
23240461	2023-08-10	Lucerne	Coach/Content Teacher
23240371	2023-08-10	Lucerne	Coach/Content Teacher
23240462	2023-08-10	Lucerne	TOR
23240502	2023-08-10	Lucerne	DUSD On Site Engagement Coach Peak Performance
23240484	2023-08-10	Lucerne	DUSD Content Teacher
23240475	2023-08-10	Lucerne	DUSD Content Teacher
23240431	2023-08-31	Lucerne	Liaison - Athletic Lead
23240419	2023-08-10	Lucerne	Coach/Content Teacher

Zahourek Systems, Inc.
 2198 W. 15th St.
 Loveland, CO 80538-3514



Quote

Date	Quote #
8/23/2023	17863

Name / Address
Elite Academic Academy Attn: Megan Freeman akirkland@eliteacademic.com

Please remit orders to:
aic.orders@anatomyinclay.com

Mail to - Zahourek Systems, Inc.
2198 W. 15th Street
Loveland, CO 80538

A valid/current Sales Tax Certificate is required for order processing. Recipient name, email & phone number will be requested at time of order for shipping purposes.

Rep
HM

Item	Description	Qty	Rate	Total USD
ZSA-MA-6105WSB	MANIKEN® Student 2 Work Station Bundle Each Bundle Contains the Following: 1ea ZSA-MA-6105 Student 2 Model with MultiBase, Basic Tool Set, & Clay 1ea Conversion Kit 1ea Additional Basic Tool Set	25	727.99	18,199.75T
ZSR-311	Clay Cutting Mat - 8" x 11"	50	16.99	849.50T
ZSR-316CP	EZ-Squeeze Clay Handle with Adapter, Extruder and 4pc Tip Set	4	53.99	215.96T
ZSP-MA-0201-BK/DL	*Teacher Resources* Starla on MANIKEN® Teachers Guide Curriculum in Sleeve with Atlas Download (Single User Access and Download License). Includes a two week window to initiate download. Recipient Name: Recipient Email:	1	488.99	488.99T
ZSV-MA-0012-DL	MANIKEN® Body Systems Series Download (Single User Access and Download License). Includes a two week window to initiate download. Recipient Name: Recipient Email:	1	144.99	144.99T

Total USD

Prices are subject to change.

Phone #	Fax #	Web Site
970-667-9047	970-667-5025	www.anatomyinclay.com

Zahourek Systems, Inc.
 2198 W. 15th St.
 Loveland, CO 80538-3514



Quote

Date	Quote #
8/23/2023	17863

Name / Address
Elite Academic Academy Attn: Megan Freeman akirkland@eliteacademic.com

Please remit orders to:
aic.orders@anatomyinclay.com

Mail to - Zahourek Systems, Inc.
2198 W. 15th Street
Loveland, CO 80538

A valid/current Sales Tax Certificate is required for order processing. Recipient name, email & phone number will be requested at time of order for shipping purposes.

Rep
HM

Item	Description	Qty	Rate	Total USD
ZSP-MA-0013-DL	Workbook Download: StepByStep™ Arm - Basic Muscles, Nerves & Blood Vessels (Single User Access and Download License). Includes a two week window to initiate download. Recipient Name: Recipient Email:	1	96.99	96.99T
ZSP-MA-0014-DL	Workbook Download: StepByStep™ Leg - Basic Muscles, Nerves & Blood Vessels (Single User Access and Download License). Includes a two week window to initiate download. Recipient Name: Recipient Email:	1	96.99	96.99T
ZSP-MA-0015-DL	Workbook Download: StepByStep™ Breast and Lymphatics (Single User Access and Download License). Includes a two week window to initiate download. Recipient Name: Recipient Email:	1	69.99	69.99T
	Subtotal - Purchase may be subject to Sales Tax			20,163.16
Shipping	Shipping & Handling		1,209.79	1,209.79
	Entered by LG			
	Out-of-State Sale - DO NOT USE FOR TAX EXEMPT CUSTOMERS		0.00%	0.00
			Total USD	\$21,372.95

Prices are subject to change.

EAA-Lucerne \$10,686.47
EAA-Mountain Empire \$10,686.48

Return Policy: Returns require a valid Zahourek Systems, Inc. ("ZSI") Return Merchandise Authorization (RMA). RMA number must be clearly marked on all packages, shipped pre-paid, fully insured against breakage or loss during shipment. C.O.D. shipments are NOT accepted. Returns are subject to a 15% restock fee. Returns must be initiated no later than 30 days from the receipt of goods. No returns will be accepted that do not comply with these terms and conditions. Sales on printed materials are final and non-refundable. ZSI sells products and services only with associated Product License rights and Product Disclaimer. Before you can purchase the item(s), you must read and accept the terms for the associated Product License and Product Disclaimer found at www.anatomyinclay.com/product-license and www.anatomyinclay.com/product-disclaimers. Payments for the item(s) represents that you have read, understood, and accept the Product License and Disclaimer terms.

Phone #	Fax #	Web Site
970-667-9047	970-667-5025	www.anatomyinclay.com



EAA: MOUNTAIN EMPIRE
ACCT CODE: 5851
AMOUNT: \$2,100.50
REVIEWED BY: TS

EAA: LUCERNE
ACCT CODE: 5851
AMOUNT: \$2,100.50
REVIEWED BY: TS

21014 Golden Triangle Road
Santa Clarita, CA 91350
Phone: (661) 505-1101
www.baggersports.com
Instagram - Facebook - Twitter - Yelp

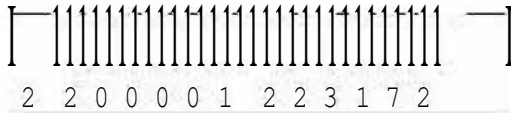
Invoice

08/08/2023 08:31:45 PM

Invoice#: 5328
Ticket: 220000122317
Register: Register 1- Main
Employee: Norma
Customer: Elite Academy Meghan Freeman

Item	#	Price
Custom Window Decal Clear	4000x	\$0.95 \$3800.00
Shipping Charge	2 x	\$20.00 \$40.00
	Subtotal	\$3840.00
	Tax (\$3800.00 @ 9.5%)	\$361.00
	Total Tax	\$361.00
	Total	\$4201.00

All bat warranty claims are made directly with the equipment manufacturer. All purchases are subject to Bagger's return policy. For information visit <https://www.baggersports.com>.
Personalized products, special orders and products marked as final sale non-refundable.
Payment in full is due upon receipt. A finance charge of 2.5% per month will be charged on all past due accounts and invoices. Additionally, payment of past due invoices with a credit card are subject to a 3.0% service fee.



EAA: LUCERNE
ACCT CODE: 5851
AMOUNT: \$11,287.46
REVIEWED BY: TS



21014 Golden Triangle Road
Santa Clarita, CA 91350
Phone: (661) 505-1101
www.baggersports.com
Instagram - Facebook - Twitter - Yelp

EAA: MOUNTAIN EMPIRE
ACCT CODE: 5851
AMOUNT: \$11,287.45
REVIEWED BY: TS

Invoice

08/10/2023 09:56:36 PM

Invoice#: 5335
Ticket: 220000122386
Register: Register 1- Main
Employee: Norma
Customer: Elite Academy Meghan Freeman

Item	#	Price
Bella Womens Short Sleeve V-Neck T-Shirt - 6405 Black Large Elite Compass Shirts 4 color front 1 color back	45 X \$18.00	\$810.00
Bella Womens Short Sleeve V-Neck T-Shirt - 6405 Black Medium Elite Compass Shirts 4 color front 1 color back	55 X \$18.00	\$990.00
Bella Womens Short Sleeve V-Neck T-Shirt - 6405 Black Small Elite Compass Shirts 4 color front 1 color back	40 X \$18.00	\$720.00
Bella Womens Short Sleeve V-Neck T-Shirt - 6405 Black X-Large Elite Compass Shirts 4 color front 1 color back	35 X \$18.00	\$630.00
Bella Womens Short Sleeve V-Neck T-Shirt - 6405 Black XX-Large Elite Compass Shirts 4 color front 1 color back	15 X \$20.00	\$300.00
Bella Womens Short Sleeve V-Neck T-Shirt - 6405 Black 3XL Elite Compass Shirts 4 color front 1 color back	15 X \$22.00	\$330.00
District ® Women's Perfect Weight ® V-Neck Tee -DM1170L Black XS Elite Compass Shirts 4 color front 1 color back	10 X \$18.00	\$180.00
Next Level - Premium Short Sleeve Crew - 3600 Black 2XL Elite Compass Shirts 4 color front 1 color back	20 X \$17.00	\$340.00
Next Level - Premium Short Sleeve Crew - 3600 Black 3XL Elite Compass Shirts 4 color front 1 color back	5 X \$19.50	\$97.50
Next Level - Premium Short Sleeve Crew - 3600 Black L	25 X \$15.00	\$375.00

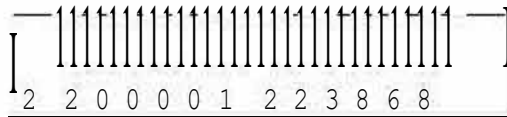
Item	#	Price
Elite Compass Shirts 4 color front 1 color back		
Next Level - Premium Short Sleeve Crew - 3600 Black M Elite Compass Shirts 4 color front 1 color back	15 X	\$15.00 \$225.00
Next Level - Premium Short Sleeve Crew - 3600 Black S Elite Compass Shirts 4 color front 1 color back	4 X	\$15.00 \$60.00
BSSP Screens Charge and Set Up Fee Shirts 4 Color Left Chest Compass Logo 1 Color back logo Polos 4 Color Left Chest Compass Logo 4 Color Bag Logo	13 X	\$30.00 \$390.00
OGIO Metro Polo - OG130 Blacktop 2XL Elite Compass Polo 4 color front	20x	\$37.50 \$750.00
OGIO Metro Polo - OG130 Blacktop 3XL Elite Compass Polo 4 color front	5 X	\$39.50 \$197.50
OGIO Metro Polo - OG130 Blacktop L Elite Compass Polo 4 color front	24 X	\$35.00 \$840.00
OGIO Metro Polo - OG130 Blacktop M Elite Compass Polo 4 color front	15 X	\$35.00 \$525.00
OGIO Metro Polo - OG130 Blacktop XL Elite Compass Polo 4 color front	35 X	\$35.00 \$1225.00
OGIO Metro Polo - OG130 Blacktop S Elite Compass Polo 4 color front	4 X	\$35.00 \$140.00
Elite Academy OGIO® Ladies Glam Polo - LOG105 Blacktop 2XL Elite Compass Polo 4 color front	15 X	\$42.00 \$630.00
Elite Academy OGIO® Ladies Glam Polo - LOG105 Blacktop 3XL Elite Compass Polo 4 color front	15 X	\$44.50 \$667.50
Elite Academy OGIO® Ladies Glam Polo - LOG105 Blacktop L Elite Compass Polo 4 color front	45 X	\$40.00 \$1800.00
Elite Academy OGIO® Ladies Glam Polo - LOG105 Blacktop M Elite Compass Polo 4 color front	55 X	\$40.00 \$2200.00
Elite Academy OGIO® Ladies Glam Polo - LOG105 Blacktop S Elite Compass Polo 4 color front	40 X	\$40.00 \$1600.00
Elite Academy OGIO® Ladies Glam Polo - LOG105 Blacktop XL Elite Compass Polo 4 color front	35 X	\$40.00 \$1400.00
Elite Academy OGIO® Ladies Glam Polo - LOG105 Blacktop XS	10 X	\$40.00 \$400.00

Item	#	Price
Elite Compass Polo 4 color front		
Zip Tote Bag - BG410 Black Elite Compass Polo 4 color front	200 X	\$12.00 \$2400.00
Shipping Charge	1X	\$431.27 \$431.27
		Subtotal \$20653.77
		Tax (\$19832.50 @ 9.5%) \$1884.09
		Tax (\$390.00 @ 9.5%) \$37.05
		Total Tax \$1921.14
		Total \$22574.91

All bat warranty claims are made directly with the equipment manufacturer. All purchases are subject to Bagger's return policy. For information visit <https://www.baggersports.com>.

Personalized products, special orders and products marked as final sale non-refundable.

Payment in full is due upon receipt. A finance charge of 2.5% per month will be charged on all past due accounts and invoices. Additionally, payment of past due invoices with a credit card are subject to a 3.0% service fee.





Search



Sign In / Register Orders & Returns [Cart](#)

- Shop
- Grocery
- Same Day Delivery
- Deals
- Business Delivery
- Optics
- Pharmacy
- Services
- Photo
- Travel
- Members
- Locations

My Warehouse
 9 Temecula
 clo.ed Open 10.00AM Thursday

Delivery Location
 C.J. 92590

[lists/](#) [Buy Again](#)

Cart (35 Items)



HP 14" Laptop, 13th Gen Intel Core i7-1355U • 1080p, Windows 11

\$799.99

- 30 +

Remove



McAfee Total Protection, 1 Device. (E-Delivery)

Included with Purchase

\$0.01

Quantity

5

Total
 \$23,999.70

Standard: \$-449.70
 Estimated Delivery
 Monday, September 11, 2023

Estimated Delivery
 Friday, September 8, 2023

Warehouse Pick Up (Members Only) 0

Select a Warehouse
 Standard: \$449.70

Delivery Details

[Add to list](#) | [Save for later](#)

Delivery via Email Shipping & Handling Included

Delivery Details

Total
 \$0.05



Estimated Total
 \$24,449.40

Apply Today

Subtotal \$23,999.75
 Discount on Order
 Shipping & Handling for 92590 \$449.70
 Estimated Total \$24,449.40

Applicable taxes will be calculated at checkout



BrainPOP

Issued By Shannon Broach
Email shannonb@brainpop.com
Phone (212) 574-6125

Quote PDF (Created 7/13/2023 Date)
Quote Number 00045864
Account Name Elite Academic Academy

Contact Name [REDACTED]

Email [REDACTED]

Please Note: If the person listed above is not the primary contact for your subscription, please let us know.

Product Name	Quantity	Description	Product Description	Sales Price	Subtotal
60-Minute Facilitated Webinar	1.00	Complimentary: Special 2023 promotion	60-minute webinar with our professional learning services team on how to maximize your implementation of BrainPOP in classrooms across the curriculum.	USD 535.00	USD 0.00
Virtual School: Combo	1.00	Virtual School: Up to 199 students	Over 1,200 topics across the curriculum, including grade-level movies with Pause Points, quizzes, challenges, and creative learning tools.	USD 3,015.00	USD 3,015.00

Subtotal USD 3,550.00

Grand Total USD 3,015.00

Total Savings Amount USD 535.00

Provisions

Access Recipient	Product	Access Start Date	Access End Date	Provision Price
Elite Academic Academy	Virtual School: Combo	10/17/2023	10/16/2024	USD 3,015.00

I accept the purchase of the items included herein. I understand that I will be invoiced for this order.

Name: _____ Authorized Signature: _____

Title: _____ Date: _____

*Please include any applicable tax exemption certificates for the school/district along with your order.

Quote valid for 90 days. All amounts listed are in USD. This subscription is governed by the Terms of Use and Privacy Policy posted on www.brainpop.com, as amended from time to time. By accepting this quote, you agree to these terms. Changes/modifications to the terms must be approved and signed by an authorized representative of BrainPOP. Terms and conditions submitted with any Purchase Order shall not apply to this subscription. If the Customer has a signed agreement with BrainPOP that is applicable to this subscription, then that agreement will apply.

Remit to BrainPOP Accounts Receivable PO BOX 28119 | New York, NY 10087-8119 | Fax 866-867-6629
Please make all checks payable to 'BrainPOP'. Email: purchaseorders@brainpop.com



CORPORATE SALES AGREEMENT

PURCHASER INFORMATION:

Purchaser Name: Elite Homeschool Academy

Purchaser Address:

Attention: [Redacted]

Purchaser Email Address: [Redacted]

Purchaser Phone Number: 951.528.4271

TERMS:

Purchaser agrees to purchase 150 annual subscriptions to Curiosity Stream for a term to begin July 27, 2023, with an expiration of July 26, 2024. Purchaser agrees to pay US\$11.00 each for Standard Annual Plan per subscriber for a total upfront fee of US\$1,650, payable within 30 days of receipt of invoice from Curiosity, Inc. This Agreement shall automatically renew for additional terms of one year unless terminated by Purchaser or Curiosity, Inc. upon 30 days written notice to the contacts below.

INTEGRATION:

Within 30 days of the above date, and at least 10 days before the subscription start date, Partner to provide Curiosity, Inc. with the preferred method of delivery.

Check One:

- Email Provision List
Exclusive Access Code
Access URL

Purchaser acknowledges that the start date and end dates for each subscription are as set forth above, regardless of when a subscription is first accessed by the individual user and regardless of when email addresses are actually provided to Curiosity, Inc. by Purchaser.

Purchaser Integration Contact:

Contact Email:

Curiosity, Inc. Contact: Andy Cassell

Contact Email: andy.cassell@curiositystream.com

Business Contact: April Vara-Pages

Contact Email: april.vara@curiositystream.com

PAYMENT DETAILS:

Wire Transfer

Bank of America

ACCT Name: CuriosityStream, Inc.

100 S Charles Street

Account Number

Routing Number/ABA for ACH

Routing Number/ABA for Wires

4460 0585 5034

052 001 633

026 009 593

Credit Card

ACCEPTANCE SIGNATURE:

For Curiosity, Inc.:

For Purchaser:

Name:

Sign:

Name:

Sign:



Because learning changes everything.®

QUOTE PREPARED FOR:

ELITE ACADEMIC ACAD MTN EMPIRE
43414 BUSINESS PARK DR
TEMECULA, CA 92590
ACCOUNT NUMBER: 15265153

SUBSCRIPTION/DIGITAL CONTACT:

██████████
████████████████████
(866) 354-8302

CONTACT:

████████████████████
(866) 354-8302

SALES REP INFORMATION:

Patti Crowley
patti.crowley@mheducation.com

Section Summary	Value of All Materials	Free Materials	Product Subtotal
ALEKS 1 Year	\$2,411.00	\$0.00	\$2,411.00
PRODUCT TOTAL*	\$2,411.00	\$0.00	\$2,411.00
ESTIMATED S&H**			\$0.00
ESTIMATED TAX**			TBD
GRAND TOTAL*			\$2,411.00

* Price firm for 90 days from quote date. Price quote must be attached to school purchase order to receive the quoted price and free materials.

**Shipping and handling charges shown are only estimates. Actual shipping and handling charges will be applied at time of order. Taxes are not included in the quote total. If applicable, actual tax charges will be applied at time of order.

Comments:

PLEASE INCLUDE THIS PROPOSAL WITH YOUR PURCHASE ORDER

SEND ORDER TO:

McGraw Hill LLC |
Email: orders_mhe@mheducation.com | Phone: | Fax:

QUOTE DATE: 07/28/2023 ACCOUNT NAME: ELITE ACADEMIC ACAD MTN EMPIRE EXPIRATION DATE: 10/26/2023
QUOTE NUMBER: PCROW-07282023012057-001 ACCOUNT #: 15265153 PAGE #: 1



Because learning changes everything.®

Product Description	ISBN	Qty	Unit Price	Free Materials	Line Subtotal
ALEKS 1 Year					
ALEKS 6-12 MATH 1 YEAR STANDALONE SUBSCRIPTION	978-1-93-548506-3	50	\$48.22	\$0.00	\$2,411.00
ALEKS 1 Year Subtotal:				\$0.00	\$2,411.00

PLEASE INCLUDE THIS PROPOSAL WITH YOUR PURCHASE ORDER

SEND ORDER TO:

McGraw Hill LLC |

Email: orders_mhe@mheducation.com | Phone: | Fax:

QUOTE DATE: 07/28/2023

ACCOUNT NAME: ELITE ACADEMIC ACAD MTN EMPIRE

EXPIRATION DATE: 10/26/2023

QUOTE NUMBER: PCROW-07282023012057-001

ACCOUNT #: 15265153

PAGE #: 2

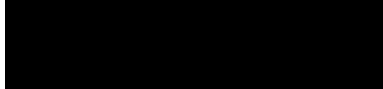


Because learning changes everything.®

QUOTE PREPARED FOR:

ELITE ACADEMIC ACAD MTN EMPIRE
43414 BUSINESS PARK DR
TEMECULA, CA 92590
ACCOUNT NUMBER: 15265153

CONTACT:



(866) 354-8302

VALUE OF ALL MATERIALS	\$2,411.00
FREE MATERIALS	\$0.00
PRODUCT TOTAL*	\$2,411.00
ESTIMATED SHIPPING & HANDLING**	\$0.00
ESTIMATED TAX**	TBD
GRAND TOTAL	\$2,411.00

SUBSCRIPTION/DIGITAL CONTACT:



Comments:

*Price firm for 90 days from quote date. Price quote must be attached to school purchase order to receive the quoted price and free materials.

**Shipping and handling charges shown are only estimates. Actual shipping and handling charges will be applied at time of order. Taxes are not included in the quote total. If applicable, actual tax charges will be applied at time of order.

Terms of Service:

By placing an order for digital products (the 'Subscribed Materials'), the entity that this price quote has been prepared for ('Subscriber') agrees to be bound by the Terms of Service and any specific provisions required by Subscriber's state law, each located in the applicable links below. Subject to Subscriber's payment of the fees set out above, McGraw Hill LLC hereby grants to Subscriber a non-exclusive, non-transferable license to allow only the number of Authorized Users that corresponds to the quantity of Subscribed Materials set forth above to access and use the Subscribed Materials under the terms described in the Terms of Service and any specific provisions required by Subscriber's state law, each located in the applicable links below. The subscription term for the Subscribed Materials shall be as set forth in the Product Description above. If no subscription term is specified, the initial term shall be one (1) year from the date of this price quote (the 'Initial Subscription Term'), and thereafter the Subscriber shall renew for additional one (1) year terms (each a 'Subscription Renewal Term'), provided MHE has chosen to renew the subscription and has sent an invoice for such Subscription Renewal Term to Subscriber.

[Terms Of Service](#)

[Provisions required by Subscriber State law](#)

ATTENTION: In our effort to protect our customer's data, we will no longer store credit card data in any manner within in our system. Therefore, as of April 30, 2016 we will no longer accept credit card orders via email, fax, or mail/package delivery. Credit card orders may be placed over the phone by calling the number listed above or via our websites by visiting www.mheducation.com (or www.mhecoast2coast.com).

School Purchase Order Number: _____

Name of School Official (Please Print)

Signature of School Official

PLEASE INCLUDE THIS PROPOSAL WITH YOUR PURCHASE ORDER

SEND ORDER TO:

McGraw Hill LLC |
Email: orders_mhe@mheducation.com | Phone: | Fax:

QUOTE DATE: 07/28/2023 ACCOUNT NAME: ELITE ACADEMIC ACAD MTN EMPIRE EXPIRATION DATE: 10/26/2023
QUOTE NUMBER: PCROW-07282023012057-001 ACCOUNT #: 15265153 PAGE #: 3



Date: 07/21/2023
 Order Number: Q-552973
 Revision: 1
 Order Form Expiration Date: 07/31/2023

ORDER FORM

Orders Under \$25,000.00 may pay by Credit Card:
 Call 214.294.9901 or e-mail creditcardprocessing@edmentum.com

Customer and Billing Address

Customer No.: 502192
 Customer Name: Elite Academic Acad Mtn Empire
 Billing Address: 43414 Business Park Dr
 Temecula, CA 92590-5526

Products and Services

Elite Academic Acad Mtn Empire

Products	Qty	License Start Date	License End Date	License Term (Months)
Courseware: Core Library - Program License	50	08/22/2023	08/21/2024	12
Courseware: HS CTE Library - Program License	25	08/22/2023	08/21/2024	12
Courseware: HS Electives Library - Program License	10	08/22/2023	08/21/2024	12
Reading Eggs - Program License	75	08/22/2023	08/21/2024	12
Customer Success Services	1	08/22/2023	08/21/2024	12

Elite Academic Acad Mtn Empire Subtotal:

Total US Funds:

** Unless otherwise specified in this Order Form, the Start Date for your license(s) will be one of the following: (a) the day immediately following the expiration date of the prior license term or (b) the date in which we have accepted your order and have issued log-in credentials for your software license.

*** Services purchased are valid for an annual term. Any service offering that is not used during the applicable term will expire and cannot be carried over or used in subsequent periods.

Taxes

Prices shown above do not include any state and local taxes that may apply. Any such taxes are the responsibility of the Customer and will appear on the final invoice. If the contracting entity is exempt from sales tax, please send the applicable tax exemption certificate to orders@edmentum.com or attach the certificate to this order form in the Signature section.

Invoicing and Payment Terms

Payment Due Date	Amount

Edmentum | P.O. Box 776725 | Chicago, IL 60677-6725 | www.edmentum.com





Date: 07/21/2023
 Order Number: Q-552973
 Revision: 1
 Order Form Expiration Date: 07/31/2023

ORDER FORM

Orders Under \$25,000.00 may pay by Credit Card:
 Call 214.294.9901 or e-mail creditcardprocessing@edmentum.com

8/15/2023	USD 8,775.00
Total	USD 8,775.00

Terms and Conditions

For the purposes of this Order Form, "you" and "your" refer to Customer, and "we", "us" and "our" refer to Edmentum Inc. and affiliates. This Order Form and any documents it incorporates (including the Standard Purchase and License Terms located at <http://www.edmentum.com/standardterms> and the documents it references) form the entire agreement between you and us ("Agreement"). You acknowledge that any terms and conditions in your purchase order or any other documents you provide that enhance our obligations or restrictions or contradict the Agreement do not have force and effect.

Purchase Order

You acknowledge that this Agreement is non-cancellable and you will submit a purchase order for the full amount of this Order Form. Your order will not be scheduled for delivery until you have submitted a purchase order referencing and conforming to this Order Form.

Acceptance

This offer will expire on the Order Form Expiration Date noted above unless we earlier withdraw or extend the offer in writing.

I represent that I have read the terms and conditions included in this Agreement, that I am authorized to accept this offer and the Agreement's terms and conditions on behalf of the customer identified above and that I do accept this offer on behalf of the customer who agrees to adhere to the Agreement's terms and conditions. To the extent that either parties process does not require that I execute this Order Form, I accept, acknowledge and agree to the terms and conditions identified in and referenced in this Agreement as signified by my receipt, use or access of the products and/or services identified.

Invoice Contact Information – Please Provide Your Finance Dept Contact Information

First Name:

Last Name:

Email Address:

Customer Signature

Name (Printed or Typed)

Title

Date





Date: 07/21/2023
Order Number: Q-552973
Revision: 1
Order Form Expiration Date: 07/31/2023

ORDER FORM

Orders Under \$25,000.00 may pay by Credit Card:
Call 214.294.9901 or e-mail creditcardprocessing@edmentum.com

Edmentum | P.O. Box 776725 | Chicago, IL 60677-6725 | www.edmentum.com





Rosetta Stone LLC
 777 Mariners Island Blvd., Suite 600
 San Mateo, CA 94404
 (P) 877-211-2367
 (F) 866-295-1834
 www.rosettastone.com

SERVICE ORDER FORM

July 13, 2023

Rosetta Stone Contact:
 April Storm
 Phone: (540) 236-5006
 Email: astorm@rosettastone.com

Customer Shipping Address:

██████████
 Director Elite Homeschool Academy
 Elite Academic Academy
 ██████████

Customer Billing Address:

██████████
 Director Elite Homeschool Academy
 Elite Academic Academy
 ██████████

Contact Phone: ██████████
 Contact Email: ██████████

Billing Contact Phone: ██████████
 Billing Contact Email: ██████████

We are excited to present this quotation for products and services in the Rosetta Stone® Language Learning Suite. Rosetta Stone LLC provides language learning software and services under its Rosetta Stone® brand. Rosetta Stone language products and any related online services, training and user documentation are referred to collectively herein as "Rosetta Stone Product."

PRODUCT DESCRIPTION	QTY	UNIT PRICE	TOTAL
Rosetta Stone for Schools (Gold Basic) Fixed Term License in all available levels for Arabic, Chinese (Mandarin), English (American), French and Spanish (Latin America) and access to all product specific mobile applications for iOS or select Android devices (the "License"). Each license includes maximum of eight (8) 30-minute tutoring sessions. Licenses are for named users for subscription period specified below where all licenses start and end on the same date.	15	USD 239.00	USD 3,585.00
Discount Amount	15	USD 23.90	USD 358.50
Rosetta Stone for Schools (Silver) is fixed term license for online access to language lessons and solo activities and stories in one of all commercially available languages (including English) and all available levels for use on Windows and Mac computers and includes administrator tools and access to all product specific mobile applications for iOS or select Android devices (the "License"). The License includes digital download of Supplementary Materials for the following languages: English US, Spanish (Latin America), French, and German. Licenses are for named users for subscription period specified below where all licenses start and end on the same date. Licenses may be transferred to other Authorized End Users during the subscription period.	25	USD 120.00	USD 3,000.00
Discount Amount	25	USD 12.00	USD 300.00
Total Discounts & Promotions			USD 658.50
Sub Total			USD 5,926.50
Total Sales Tax			USD 0.00
Total Shipping Charges			USD 0.00
Grand Total			USD 5,926.50
Notes			
<ul style="list-style-type: none"> Any applicable sales, use, excise, property or other federal, state, county, municipal, local or foreign taxes, levies, VAT, GTS, or other indirect taxes, customs duties, tariffs, or other imposts are the responsibility of the purchaser; any such amounts included in this quote are estimates for informational purposes only. Renewal: existing site expires on September 8, 2023. 			

Pricing is valid through September 8, 2023.

TERM AND TERMINATION

This Order Form Agreement becomes effective upon its acceptance by both parties and continues in effect for a period of 12 months following the service activation date of September 8, 2023 (the "Term"). The Term of this Agreement is renewable upon mutual agreement of the parties.

Unless otherwise set forth herein, all Product licenses shall have the same start and end dates, all Products are deemed delivered upon provisioning of license availability, and all services must be used within the Subscription Period; unused Product licenses or services are not eligible for refund or credit. Onsite training fulfilled with virtual training equivalency as needed. Virtual training equivalency = four (4) live online sessions for each onsite training day session. Without prejudice to its other rights, Rosetta Stone may suspend delivery of the Product/services in the event that Customer fails to make any payment when due.

INVOICING AND PAYMENT TERMS

Rosetta Stone will invoice Customer for the total purchase price stated above [plus all applicable taxes] upon acceptance of this Order Form by both parties. Invoices are payable on Net 30 day terms, F.O.B. Origin.

ACCEPTANCE

This quote also serves as an order form (the "Order Form"). To place this order, please sign this Order Form below and fax it along with any applicable purchase order to 866-295-1834. Alternatively, this order may also be placed by inserting the serial number appearing on the bottom right of this quote on the applicable purchase order, attaching this quote to the purchase order and faxing the purchase order and this quote to the above fax number.

In placing this order, Customer accepts the terms and conditions described in the Rosetta Stone K12 Education License Agreement (the "K12 License"), available at www.rosettastone.com/legal. The K12 License, together with this Order Form, constitutes the entire agreement (the "Agreement") between Rosetta Stone and Customer. CUSTOMER AND ROSETTA STONE AGREE THAT THE TERMS AND CONDITIONS OF THIS AGREEMENT SUPERSEDE ANY PROVISIONS OF ANY CUSTOMER DRAFTED PURCHASE ORDER AND SUPERSEDE ALL PROPOSALS, WRITTEN OR ORAL, AS WELL AS OTHER COMMUNICATIONS BETWEEN CUSTOMER AND ROSETTA STONE RELATING TO THE SUBJECT MATTER HEREOF. ANY ADDITIONAL OR CONFLICTING PROVISIONS ON ANY PURCHASE ORDER ARE EXPRESSLY EXCLUDED FROM THE AGREEMENT. IN THE EVENT OF ANY CONFLICT BETWEEN THE TERMS OF THIS ORDER FORM AND THE ROSETTA STONE K12 EDUCATION LICENSE AGREEMENT, THE ORDER FORM SHALL GOVERN.

ROSETTA STONE LLC

By: _____

Authorized Signing Authority

Printed Name/Title

Date

ELITE ACADEMIC ACADEMY

By: _____

Authorized Signing Authority

Printed Name/Title

Date

Zingy Learning

245 East 93rd Street, #6J
New York, NY 10128

Tel 1-800-977-1623
Email: info@zingylearning.com

Bill To:
Elite Academic Academy
43414 Business Park Drive
Temecula, CA 92590

Quote

Quote #: 27017

SALES PERSON	DATE
Sharon Okouneff	July 21, 2023
Description	Amount
500 Zingy Learning accounts (2023-2024 school year)	\$1500.00
	Balance Due: \$1500.00

Proposal for Engineering Support

Terms: Start date mid- April. Billed on the 1st of every month, except for the first invoice which was for 1.5 months. This service is expected to remain necessary as long as the app is running.

Summary of Services

Ongoing engineering support involves a combination of bug fixing, performance optimization, security updates, infrastructure management, technical support, and version control.

Troubleshooting problems and guiding users on how to best utilize the platform's features.

Gathering user input and suggesting the optimal new features to add.

Team consists of 3 engineers, staffing the slack channel to allow for timely responses to requests.

EAA-Lucerne \$900

EAA-Mountain

Empire \$900

Fees: \$1800 per month

Make checks payable to:

Prime Educational Solutions
Attn: Catherine Heredia, CEO
27475 Ynez Rd #720
Temecula, Ca.92591

Bill to:

Elite Academic Academy
43414 Business Park Dr
Temecula, CA 92590



Proposal for Bridge Phase: Feature Development

Terms: These features were necessary additions during the last enrollment period. Engineers built new features on a per hour, not to exceed, basis.

Summary of Services

Includes:

Automatic data export to SIS (\$3,000);

Google Drive Integration \$600;

Automatic Reminders \$500;

Auto-populating address bar \$300;

Syncing approved application to google sheet \$500

+ \$3400 Project management

EAA-Lucerne \$4,150

EAA-Mountain Empire \$4,150

Fees: \$8,300

Make checks payable to:

Prime Educational Solutions
Attn: Catherine Heredia, CEO
27475 Ynez Rd #720
Temecula, Ca.92591

Bill to:

Elite Academic Academy
43414 Business Park Dr
Temecula, CA 92590



Elite Academic Academy Staff Meeting

Summary

INVOICE NUMBER : 337E4-32387
DATE OF INVOICE: 8/28/2023
INVOICE TOTAL: \$2,410.60



Room Charges	\$	62,455.31
Catering Charges	\$	70,999.22
Audio Visual Charges	\$	36,379.17
Deposit(s)	\$	(167,423.10)
Total Amount Due:	\$	2,410.60

EAA-Lucerne \$ 84,916.85

EAA-Mountain Empire \$84,916.85



Board Resolution

Date: September 7, 2023

Meeting ID: #2023-09-07-BR

Location: Zoom ID 975 6620 2696

Elite Academic Academy Board President: Dr. Susan McDougal

Board Vice President: Ms. Cody Simms

Subject: Increase in Educational Funds for TK-8 and 9-12 Programs

WHEREAS, Elite Academic Academy is committed to providing high-quality, personalized education to all its students in accordance with the policies outlined in our 23.24 Parent Student Handbook; and

WHEREAS, the cost of goods and services necessary to personalize a child's education has increased due to inflation and other factors; and

WHEREAS, it is essential to ensure that each child at Elite Academic Academy has access to a high-quality individualized learning plan;

NOW, THEREFORE, BE IT RESOLVED, that the Board of Directors of Elite Academic Academy approves the following increase in educational funds for the TK-8 and 9-12 programs, effective immediately:

TK-8 Program:

- The educational fund allocation per student shall be increased to \$2,950, reflecting an increase of \$100 from the previous allocation.

9-12 Program:

- The educational fund allocation per student shall be increased to \$3,300, reflecting an increase of \$100 from the previous allocation.

BE IT FURTHER RESOLVED, that these additional funds are not the property of the student or the parent but are to be exclusively used by Elite Academic Academy to ensure each child's academic program is personalized effectively.

BE IT FURTHER RESOLVED, that these funds must be used responsibly in accordance with our 23.24 Parent Student Handbook, Common Core Standards and CA. Educational Code to support the personalization of each child's academic program and cover the increased costs of goods and services.

BE IT FURTHER RESOLVED, that the Board of Directors authorizes the administration of Elite Academic Academy to implement the necessary adjustments to the budget and allocate these additional funds to their designated programs accordingly.

BE IT FURTHER RESOLVED, that this resolution shall take effect immediately upon its approval and shall be communicated to all relevant parties, including parents, students, and staff members, to ensure transparency and accountability.

Passed this 7th day of September, 2023, at a duly convened meeting of the Board of Directors of Elite Academic Academy.

CERTIFICATE OF ADOPTION

I hereby certify that the foregoing resolutions were passed and adopted by the Board of Directors of the Company, at a meeting thereof duly held on September 7, 2023, by the following vote:

AYES:
NAYS:
ABSTAIN:
ABSENT:

The undersigned certifies further that the foregoing Resolution has not been modified, amended or rescinded and is in full force and effect as of the date hereof.

By:

Name: Dr. Susan McDougal
Title: President of the Board
Elite Academic Academy - Lucerne

I, Cody Simms, Vice President of the Board of Directors of Elite Academic Academy - Lucerne of the Lucerne Valley Unified School District in San Bernardino County, California, do hereby certify that the foregoing is a full, true and correct copy of a resolution adopted by said board at the regularly scheduled and conducted meeting held at the time and place stated, which resolution is on file in the office of said board.

Signed: _____
Dr. Susan McDougal, President, Elite Academic Academy -Lucerne Board of Directors

Signed: _____
Ms. Cody Simms, Vice President, Elite Academic Academy -Lucerne Board of Directors

**Elite Academic Academy
Allocation of Wages & Benefits
FY 2022-23**

	LU	ME	Total
Wages	\$4,908,717	\$5,295,150	\$10,203,867
Benefits:			
STRS	\$768,775	\$838,841	\$1,607,616
Social Security	\$34,587	\$34,587	\$69,174
Medicare	\$70,309	\$75,808	\$146,118
Health Insurance	\$324,971	\$369,045	\$694,016
SUI/ETT	\$28,900	\$31,133	\$60,033
Workers Compensation	\$52,110	\$56,137	\$108,246
Classified Retirement Plans/403b	\$40,260	\$40,085	\$80,345
Total Benefits	\$1,319,912	\$1,445,636	\$2,685,203
Total Wages & Benefits	\$6,228,629	\$6,740,787	\$12,969,416

FY 23 EAA FTE PER EMPLOYEE

SITE	GL CODE	EMPLOYEE #	LUCERNE FTE	MOUNTAIN EMPIRE FTE	LUCERNE ALLOCATION %	MOUNTAIN EMPIRE ALLOCATION %
0DS21	1100 - Teachers	476	0.5	0.5	50%	50%
0DS21	1100 - Teachers	304	0.5	0.5	50%	50%
0DS21	2100 - Non-Certificated Instructional Aide	129	0.5	0.5	50%	50%
0DS22	1100 - Teachers	260	0.2	0.8	20%	80%
0DS21	2900 - Other Non-Certificated	63	0.5	0.5	50%	50%
0DS21	1300 - Certificated Supervisors and Administrators	20	0.4	0.6	40%	60%
0DS22	1100 - Teachers	457	0.5	0.5	50%	50%
0DS22	1145 - Special Education Teachers	297	0.5	0.5	50%	50%
0DS22	2100 - Non-Certificated Instructional Aide	401	0.5	0.5	50%	50%
0DS21	1100 - Teachers	363	0.8	0.2	80%	20%
0DS22	1100 - Teachers	225	0.6	0.4	60%	40%
0DS22	2400 - Clerical and Office	471	0.5	0.5	50%	50%
0DS22	1100 - Teachers	342	0.5	0.5	50%	50%
0DS21	1100 - Teachers	391	0.2	0.8	20%	80%
0DS22	2100 - Non-Certificated Instructional Aide	423	0.5	0.5	50%	50%
0DS21	2400 - Clerical and Office	427	0.5	0.5	50%	50%
0DS21	1100 - Teachers	483	0.5	0.5	50%	50%
0DS21	1100 - Teachers	456	0.5	0.5	50%	50%
0DS22	2100 - Non-Certificated Instructional Aide	311	0.5	0.5	50%	50%
0DS22	1100 - Teachers	263	0.2	0.8	20%	80%
0DS21	2100 - Non-Certificated Instructional Aide	1124	0.5	0.5	50%	50%
0DS22	1100 - Teachers	422	0.5	0.5	50%	50%
0DS22	1100 - Teachers	306	0.5	0.5	50%	50%
0DS21	1100 - Teachers	465	0.5	0.5	50%	50%
0DS21	2900 - Other Non-Certificated	356	0.5	0.5	50%	50%
0DS21	2400 - Clerical and Office	425	0.5	0.5	50%	50%
0DS21	1100 - Teachers	364	0.5	0.5	50%	50%
0DS21	1100 - Teachers	33	0.5	0.5	50%	50%
0DS22	1900 - Other Certificated	265	0.5	0.5	50%	50%
0DS21	2100 - Non-Certificated Instructional Aide	463	0.5	0.5	50%	50%
0DS21	1100 - Teachers	287	0.8	0.2	80%	20%
0DS21	1100 - Teachers	455	0.5	0.5	50%	50%
0DS21	1300 - Certificated Supervisors and Administrators	352	0.5	0.5	50%	50%
0DS22	1100 - Teachers	319	0.2	0.8	20%	80%
0DS22	1100 - Teachers	397	0.6	0.4	60%	40%
0DS21	1100 - Teachers	323	0.8	0.2	80%	20%
0DS21	1100 - Teachers	329	0.6	0.4	60%	40%
0DS21	1100 - Teachers	317	0.8	0.2	80%	20%
0DS21	1100 - Teachers	51	0.5	0.5	50%	50%
0DS22	1100 - Teachers	242	0.5	0.5	50%	50%
0DS21	2100 - Non-Certificated Instructional Aide	415	0.5	0.5	50%	50%
0DS21	1100 - Teachers	449	0.5	0.5	50%	50%
0DS21	1100 - Teachers	340	0.2	0.8	20%	80%
0DS21	1100 - Teachers	337	0.5	0.5	50%	50%
0DS22	1100 - Teachers	213	0	1	0%	100%
0DS21	1100 - Teachers	464	0.5	0.5	50%	50%
0DS22	1100 - Teachers	334	0.5	0.5	50%	50%
0DS21	2100 - Non-Certificated Instructional Aide	426	0.5	0.5	50%	50%
0DS21	1100 - Teachers	357	0.2	0.8	20%	80%
0DS21	1100 - Teachers	399	0.5	0.5	50%	50%
0DS22	1100 - Teachers	219	0.2	0.8	20%	80%
0DS21	1300 - Certificated Supervisors and Administrators	122	0.5	0.5	50%	50%
0DS21	2400 - Clerical and Office	360	0.5	0.5	50%	50%
0DS22	1100 - Teachers	326	0.2	0.8	20%	80%
0DS21	1100 - Teachers	305	0.5	0.5	50%	50%
0DS21	1100 - Teachers	453	0.5	0.5	50%	50%
0DS21	1100 - Teachers	344	0.5	0.5	50%	50%
0DS21	1100 - Teachers	332	0.8	0.2	80%	20%
0DS21	1300 - Certificated Supervisors and Administrators	2	0.5	0.5	50%	50%
0DS22	2400 - Clerical and Office	370	0.5	0.5	50%	50%
0DS21	1100 - Teachers	467	0.5	0.5	50%	50%
0DS21	1100 - Teachers	460	0.5	0.5	50%	50%
0DS22	1145 - Special Education Teachers	365	0.5	0.5	50%	50%
0DS21	1100 - Teachers	421	0.5	0.5	50%	50%
0DS22	1100 - Teachers	394	0.6	0.4	60%	40%
0DS21	2100 - Non-Certificated Instructional Aide	447	0.5	0.5	50%	50%
0DS21	1100 - Teachers	454	0.5	0.5	50%	50%

ODS21	2100 - Non-Certificated Instructional Aide	450	0.5	0.5	50%	50%
ODS21	1100 - Teachers	472	0.5	0.5	50%	50%
ODS22	1100 - Teachers	214	0	0.5	0%	100%
ODS21	2400 - Clerical and Office	295	0.5	0.5	50%	50%
ODS21	1100 - Teachers	16	0.5	0.5	50%	50%
ODS21	1100 - Teachers	478	0.5	0.5	50%	50%
ODS21	1100 - Teachers	477	0.5	0.5	50%	50%
ODS21	1145 - Special Education Teachers	135	0.5	0.5	50%	50%
ODS21	2400 - Clerical and Office	36	0.5	0.5	50%	50%
ODS22	1100 - Teachers	395	0.25	0.25	50%	50%
ODS22	1100 - Teachers	262	0.4	0.6	40%	60%
ODS21	1100 - Teachers	479	0.5	0.5	50%	50%
ODS21	1145 - Special Education Teachers	350	0.5	0.5	50%	50%
ODS21	2100 - Non-Certificated Instructional Aide	309	0.5	0.5	50%	50%
ODS21	1100 - Teachers	75	0.5	0.5	50%	50%
ODS21	1145 - Special Education Teachers	320	0.5	0.5	50%	50%
ODS21	1100 - Teachers	392	0.8	0.2	80%	20%
ODS21	1100 - Teachers	218	0.25	0.25	50%	50%
ODS22	1100 - Teachers	358	0.2	0.8	20%	80%
ODS21	1100 - Teachers	459	0.5	0.5	50%	50%
ODS21	1300 - Certificated Supervisors and Administrators	130	0.5	0.5	50%	50%
ODS21	1100 - Teachers	398	0.25	0.25	50%	50%
ODS22	2900 - Other Non-Certificated	409	0.5	0.5	50%	50%
ODS22	1100 - Teachers	330	0.2	0.8	20%	80%
ODS21	1300 - Certificated Supervisors and Administrators	3	0.5	0.5	50%	50%
ODS21	1100 - Teachers	333	0.2	0.8	20%	80%
ODS22	1100 - Teachers	243	0.5	0.5	50%	50%
ODS21	1100 - Teachers	458	0.5	0.5	50%	50%
ODS21	1100 - Teachers	376	0.5	0.5	50%	50%
ODS21	1100 - Teachers	385	0.5	0.5	50%	50%
ODS21	1200 - Pupil Support and Counselor	67	0.5	0.5	50%	50%
ODS21	1100 - Teachers	383	0.5	0.5	50%	50%
ODS21	1100 - Teachers	436	0.5	0.5	50%	50%
ODS21	1100 - Teachers	493	0.5	0.5	50%	50%
ODS22	1145 - Special Education Teachers	349	0.5	0.5	50%	50%
ODS21	1100 - Teachers	18	0.8	0.2	80%	20%
ODS21	1100 - Teachers	424	0.5	0.5	50%	50%
ODS22	1100 - Teachers	359	0.2	0.8	20%	80%
ODS21	2100 - Non-Certificated Instructional Aide	1125	0.5	0.5	50%	50%
ODS21	1300 - Certificated Supervisors and Administrators	9	0.5	0.5	50%	50%
ODS21	1100 - Teachers	52	0.5	0.5	50%	50%
ODS21	1900 - Other Certificated	19	0.25	0.25	50%	50%
ODS22	1100 - Teachers	259	0.2	0.8	20%	80%
ODS21	1100 - Teachers	343	0.5	0.5	50%	50%
ODS22	1100 - Teachers	382	0.5	0.5	50%	50%
ODS22	1300 - Certificated Supervisors and Administrators	257	0.5	0.5	50%	50%
ODS22	1100 - Teachers	216	0.2	0.8	20%	80%
ODS21	1100 - Teachers	384	0.5	0.5	50%	50%
ODS22	2100 - Non-Certificated Instructional Aide	303	0.5	0.5	50%	50%
ODS22	1100 - Teachers	366	0.2	0.8	20%	80%
ODS21	1100 - Teachers	486	0.5	0.5	50%	50%
ODS21	1100 - Teachers	481	0.5	0.5	50%	50%
ODS22	1100 - Teachers	377	0.5	0.5	50%	50%
ODS21	1100 - Teachers	374	0.5	0.5	50%	50%
ODS21	1300 - Certificated Supervisors and Administrators	348	0.5	0.5	50%	50%
ODS21	1100 - Teachers	46	0.5	0.5	50%	50%
ODS21	1300 - Certificated Supervisors and Administrators	474	0.5	0.5	50%	50%
ODS22	1100 - Teachers	367	0.5	0.5	50%	50%
ODS21	1100 - Teachers	113	0.5	0.5	50%	50%
ODS22	1100 - Teachers	373	0.5	0.5	50%	50%
ODS22	1100 - Teachers	105	0.4	0.6	40%	60%
ODS21	1100 - Teachers	55	0.25	0.25	50%	50%
ODS21	1100 - Teachers	485	0.5	0.5	50%	50%
ODS22	1100 - Teachers	335	0.2	0.8	20%	80%
ODS21	2400 - Clerical and Office	369	0.5	0.5	50%	50%
ODS22	2400 - Clerical and Office	328	0.5	0.5	50%	50%
ODS21	1100 - Teachers	127	0.5	0.5	50%	50%
ODS22	1100 - Teachers	322	0.2	0.8	20%	80%
ODS22	1100 - Teachers	318	0.2	0.8	20%	80%
ODS21	1100 - Teachers	480	0.5	0.5	50%	50%

ODS21	1100 - Teachers	387	0.8	0.2	80%	20%
ODS21	2100 - Non-Certificated Instructional Aide	434	0.5	0.5	50%	50%
ODS21	1100 - Teachers	379	0.5	0.5	50%	50%
ODS21	2100 - Non-Certificated Instructional Aide	433	0.5	0.5	50%	50%
ODS22	1145 - Special Education Teachers	270	0.5	0.5	50%	50%
ODS21	1100 - Teachers	24	0.5	0.5	50%	50%
ODS22	1100 - Teachers	274	0.8	0.2	80%	20%
ODS22	1100 - Teachers	205	0.5	0.5	50%	50%
ODS22	2400 - Clerical and Office	313	0.5	0.5	50%	50%
ODS21	1100 - Teachers	482	0.5	0.5	50%	50%
ODS22	1100 - Teachers	268	0.5	0.5	50%	50%
ODS21	2400 - Clerical and Office	296	0.5	0.5	50%	50%
ODS21	1200 - Pupil Support and Counselor	393	0.5	0.5	50%	50%
ODS21	1300 - Certificated Supervisors and Administrators	432	0.5	0.5	50%	50%
ODS21	1100 - Teachers	57	0.5	0.5	50%	50%
ODS21	2400 - Clerical and Office	420	0.5	0.5	50%	50%
ODS22	1100 - Teachers	284	0.2	0.8	20%	80%
ODS21	1100 - Teachers	97	0.6	0.4	60%	40%
ODS21	1100 - Teachers	468	0.5	0.5	50%	50%
ODS21	1145 - Special Education Teachers	134	0.5	0.5	50%	50%
ODS21	1100 - Teachers	136	0.6	0.4	60%	40%
ODS21	1100 - Teachers	389	1	0	100%	0%
ODS21	1100 - Teachers	368	0.5	0.5	50%	50%
ODS21	1100 - Teachers	444	0.5	0.5	50%	50%
ODS21	1100 - Teachers	466	0.5	0.5	50%	50%
ODS22	2400 - Clerical and Office	355	0.5	0.5	50%	50%
ODS21	1100 - Teachers	473	0.5	0.5	50%	50%
ODS21	1100 - Teachers	372	0.5	0.5	50%	50%
ODS21	1100 - Teachers	354	0.6	0.4	60%	40%
ODS21	2400 - Clerical and Office	470	0.5	0.5	50%	50%
ODS21	2300 - Non-Certificated Supervisors and Administrators	4	0.5	0.5	50%	50%
ODS21	1100 - Teachers	378	0.5	0.5	50%	50%
ODS22	1100 - Teachers	207	0.2	0.8	20%	80%
ODS21	1100 - Teachers	380	0.5	0.5	50%	50%
ODS21	2400 - Clerical and Office	362	0.5	0.5	50%	50%
ODS21	2300 - Non-Certificated Supervisors and Administrators	25	0.5	0.5	50%	50%
ODS21	2400 - Clerical and Office	469	0.5	0.5	50%	50%
ODS21	2100 - Non-Certificated Instructional Aide	131	0.5	0.5	50%	50%
ODS22	1100 - Teachers	264	0.6	0.4	60%	40%
ODS21	1300 - Certificated Supervisors and Administrators	80	0.5	0.5	50%	50%
ODS22	1100 - Teachers	293	0.25	0.25	50%	50%
ODS21	1100 - Teachers	487	0.5	0.5	50%	50%
ODS21	1300 - Certificated Supervisors and Administrators	61	0.5	0.5	50%	50%
ODS21	1300 - Certificated Supervisors and Administrators	58	0.5	0.5	50%	50%
ODS21	1100 - Teachers	461	0.5	0.5	50%	50%
ODS21	2900 - Other Non-Certificated	121	0.5	0.5	50%	50%
ODS21	2400 - Clerical and Office	290	0.5	0.5	50%	50%
ODS21	1100 - Teachers	285	0.4	0.6	40%	60%
ODS21	1900 - Other Certificated	400	0.5	0.5	50%	50%
ODS22	1300 - Certificated Supervisors and Administrators	351	0.5	0.5	50%	50%
ODS21	1100 - Teachers	371	0.5	0.5	50%	50%
ODS22	2400 - Clerical and Office	489	0.5	0.5	50%	50%
ODS21	1100 - Teachers	462	0.5	0.5	50%	50%
ODS21	1100 - Teachers	361	0.8	0.2	80%	20%
ODS22	1100 - Teachers	327	0.2	0.8	20%	80%
ODS21	1100 - Teachers	336	1	0	100%	0%
ODS21	1100 - Teachers	60	0.5	0.5	50%	50%
ODS21	2400 - Clerical and Office	62	0.5	0.5	50%	50%
ODS21	1300 - Certificated Supervisors and Administrators	17	0.5	0.5	50%	50%
ODS21	2400 - Clerical and Office	428	0.5	0.5	50%	50%
ODS22	1300 - Certificated Supervisors and Administrators	45	0.5	0.5	50%	50%
ODS22	2100 - Non-Certificated Instructional Aide	388	0.5	0.5	50%	50%
ODS21	1100 - Teachers	76	0.6	0.4	60%	40%
ODS21	1100 - Teachers	484	0.5	0.5	50%	50%
ODS21	1100 - Teachers	375	0.5	0.5	50%	50%
ODS21	1100 - Teachers	475	0.5	0.5	50%	50%
ODS21	1900 - Other Certificated	431	0.5	0.5	50%	50%
ODS22	2400 - Clerical and Office	321	0.5	0.5	50%	50%
ODS21	1100 - Teachers	419	0.5	0.5	50%	50%
ODS21	1300 - Certificated Supervisors and Administrators	208	0.5	0.5	50%	50%

ODS22	1300 - Certificated Supervisors and Administrators	324	0.2	0.8	20%	80%
ODS22	1100 - Teachers	437	0.5	0.5	50%	50%
ODS21	1100 - Teachers	331	0.8	0.2	80%	20%
ODS22	2400 - Clerical and Office	294	0.5	0.5	50%	50%
ODS21	1100 - Teachers	114	0.5	0.5	50%	50%
FTE TOTAL			101.7	106.8		
ALLOCATION PERCENTAGE					48.140%	51.860%

2023–24 Application for Funding

CDE Program Contact:

Consolidated Application Support Desk, Education Data Office, ConAppSupport@cde.ca.gov, 916-319-0297

Local Governing Board Approval

The local educational agency (LEA) is required to review and receive approval of their Application for Funding selections with their local governing board.

By checking this box the LEA certifies that the Local Board has approved the Application for Funding for the listed fiscal year	Yes
---	-----

District English Learner Advisory Committee Review

Per Title 5 of the California Code of Regulations Section 11308, if your LEA has more than 50 English learners, then the LEA must establish a District English Learner Advisory Committee (DELAC) which shall review and advise on the development of the application for funding programs that serve English learners.

By checking this box the LEA certifies that parent input has been received from the District English Learner Committee (if applicable) regarding the spending of Title III funds for the listed fiscal year	No
---	----

Application for Categorical Programs

To receive specific categorical funds for a school year, the LEA must apply for the funds by selecting Yes below. Only the categorical funds that the LEA is eligible to receive are displayed.

Title I, Part A (Basic Grant) ESSA Sec. 1111 et seq. SACS 3010	Yes
Title II, Part A (Supporting Effective Instruction) ESEA Sec. 2104 SACS 4035	Yes
Title III English Learner ESEA Sec. 3102 SACS 4203	No
Title III Immigrant ESEA Sec. 3102 SACS 4201	No
Title IV, Part A (Student and School Support) ESSA Sec. 4101 SACS 4127	No

*****Warning*****

The data in this report may be protected by the Family Educational Rights and Privacy Act (FERPA) and other applicable data privacy laws. Unauthorized access or sharing of this data may constitute a violation of both state and federal law.



**Board of Directors Meetings
2023/24 School Year
EAA- Lucerne at
9:00am**

Topic: Elite Academic Academy - Lucerne Board Meeting

[https://eliteacademic.zoom.us/j/97566202696?
pwd=R2daZzJSNnZPNUV3Nk83K0diZXJtUT09](https://eliteacademic.zoom.us/j/97566202696?pwd=R2daZzJSNnZPNUV3Nk83K0diZXJtUT09)

Meeting ID: 975 6620 2696

Passcode: 920373

August 3, 2023
September 7, 2023
October 5, 2023
October 13, 2023 *
November 2, 2023
December 7, 2023
February 1, 2024
March 7, 2024
April 4, 2024
May 2, 2024
June 6, 2024
June 13, 2024

*Special Meeting-Time TBD